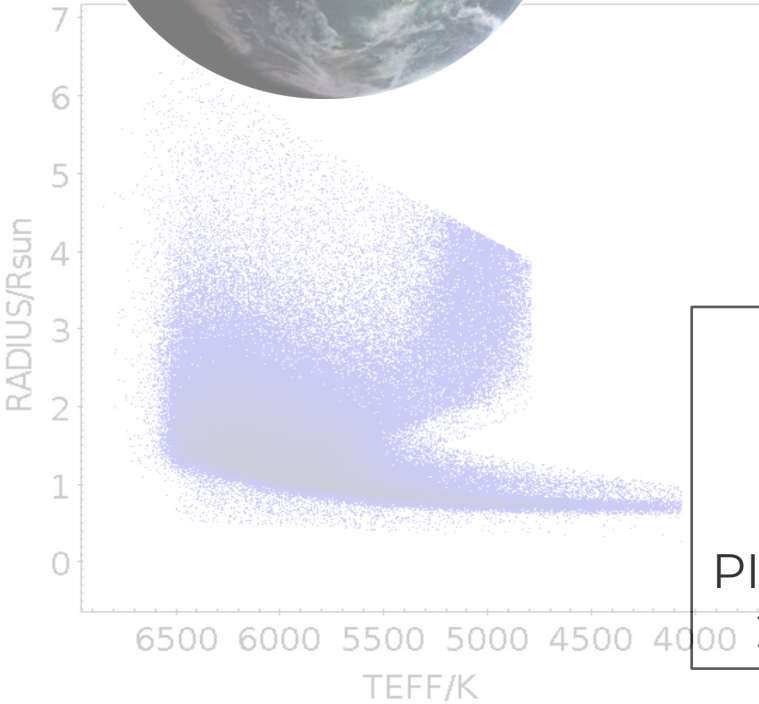
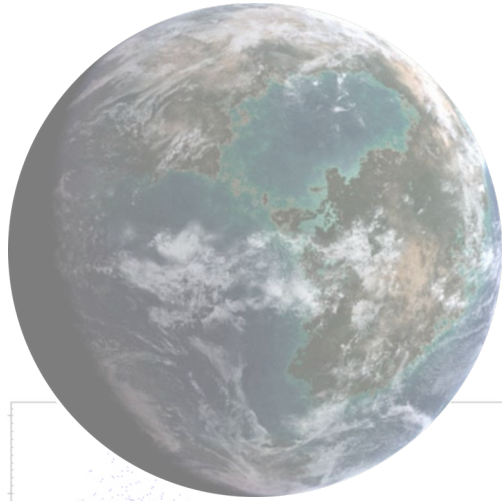


# PLATO PSM Office and the PIC

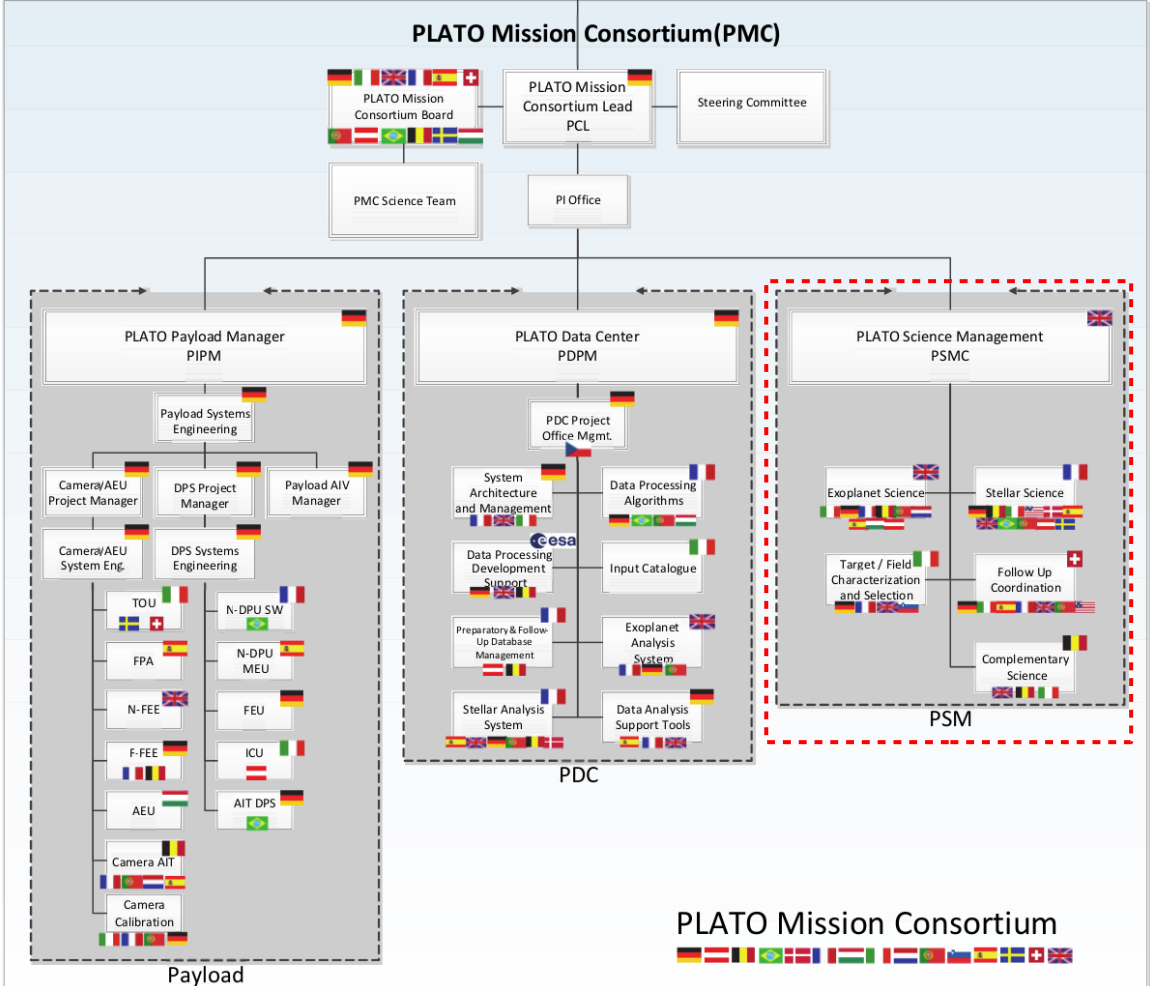
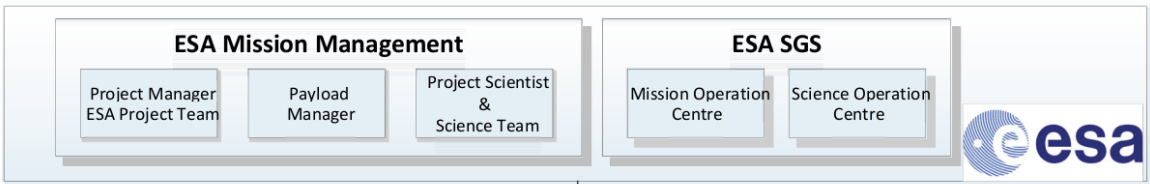


plato



**Dr. Paul A. Wilson**  
**PSM Office**  
**University of Warwick**

PIC meeting – Padova, Italy  
24 – 26 September 2019



# The PSM Office



plato

The PMC Science Management (PSM) includes more than 500 researches from more than 20 countries.

The PSM office **coordinates the work done by the PSM** members and acts as an **interface between the other PLATO groups** (especially the PDC).

**What we do:** Assist in reviews, budget preparations, organise conferences (PLATO Week) and workshops, maintain a list of members, communicate the capabilities of PLATO etc...

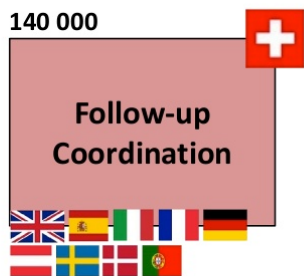
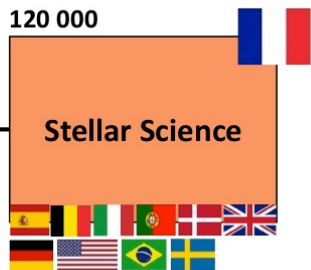
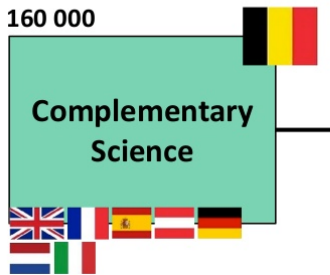
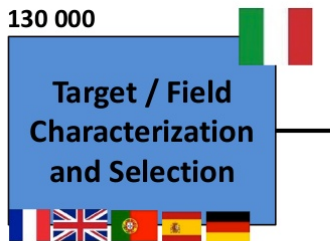
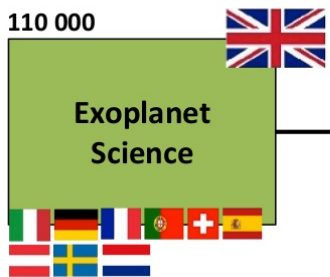
# The PSM Office



Based at the University of Warwick, UK.



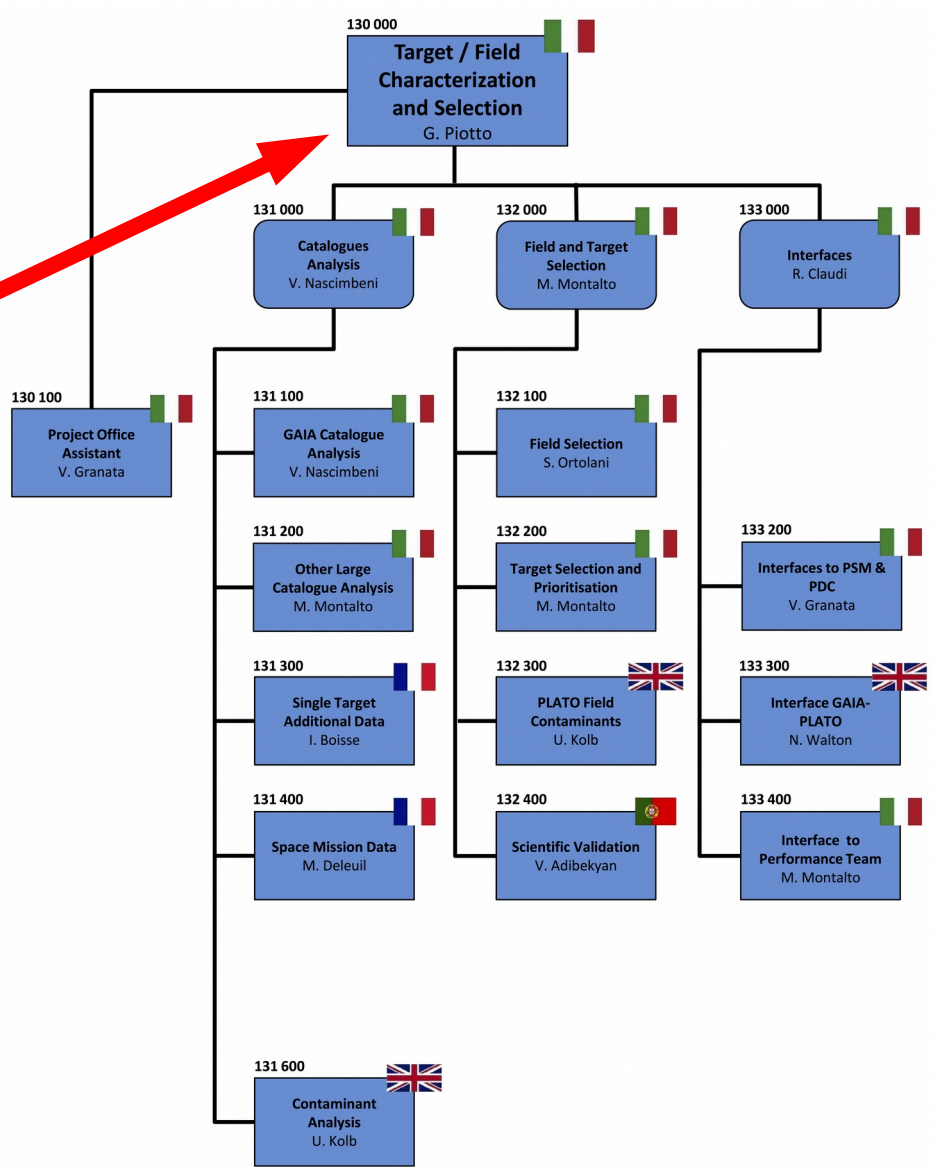
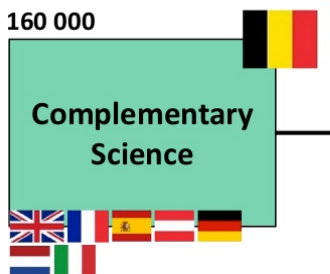
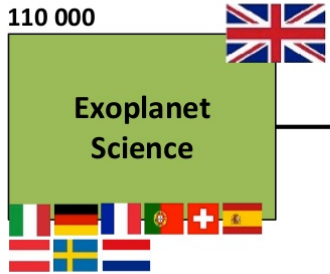
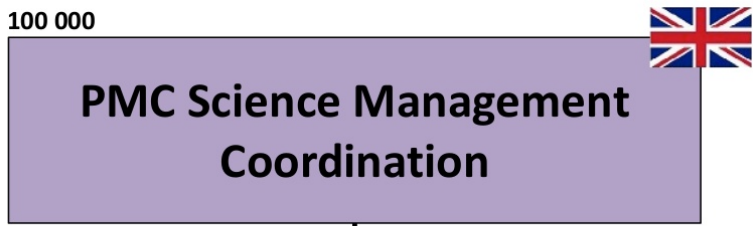
Personell: Don Pollacco (leader), David Brown & Paul A. Wilson

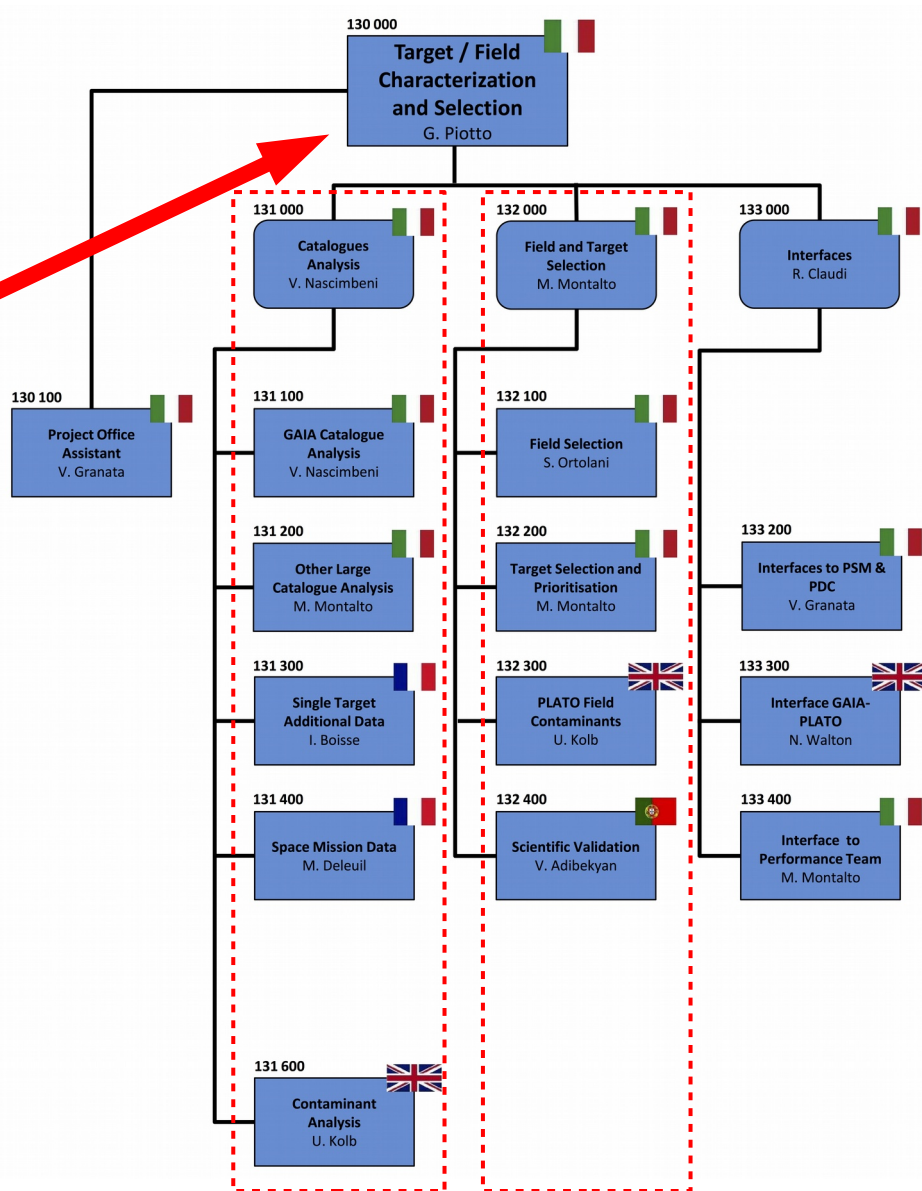
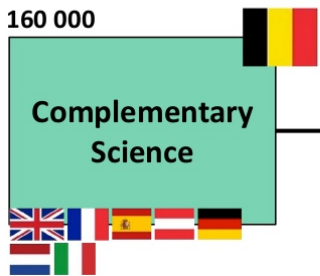
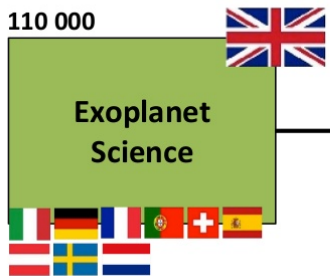


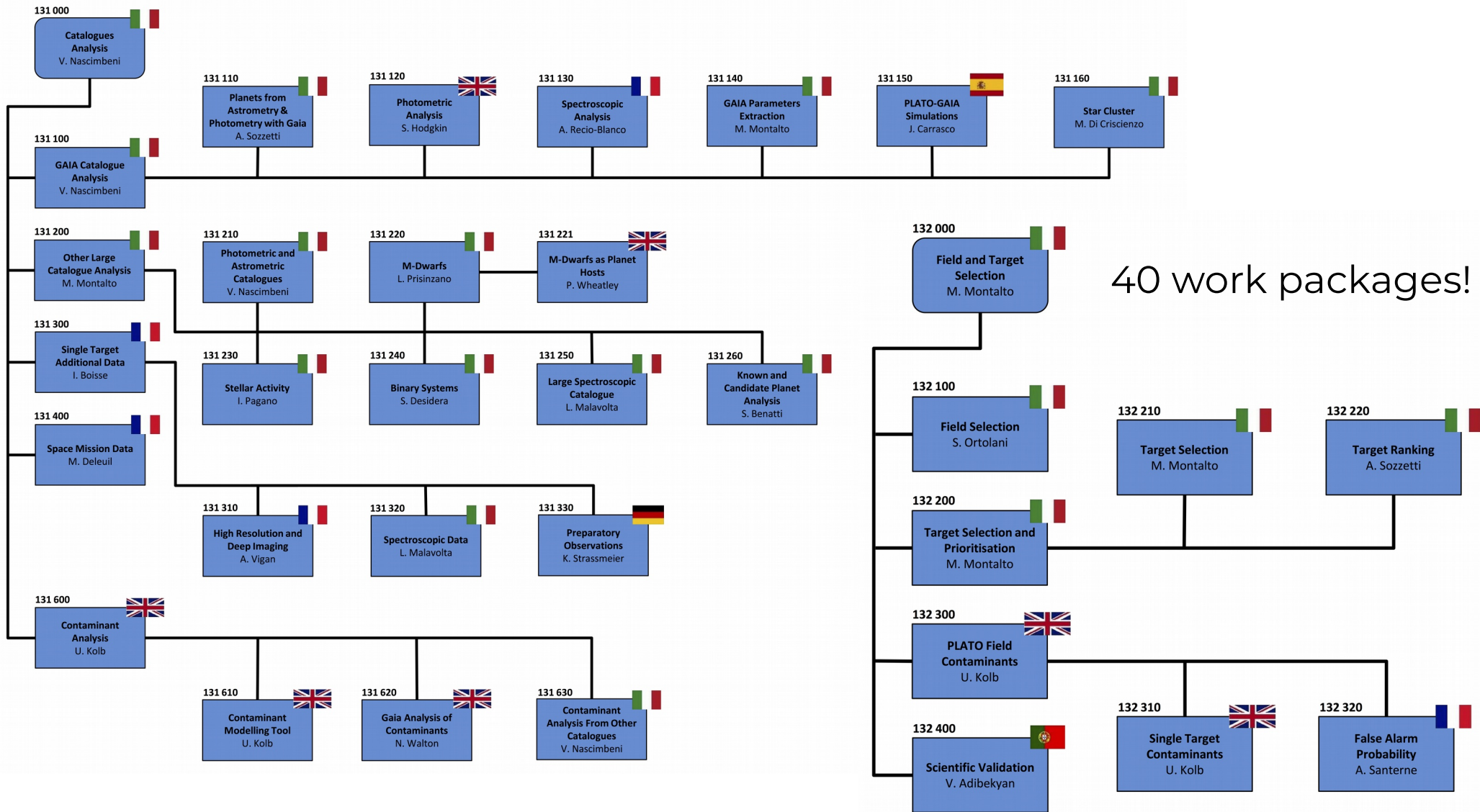
The PSM office **manages the members** of the PSM and helps facilitate efficient communication.

We are tasked with having an **overview** of the individual work packages and their responsibilities.

A challenge.









# Communication within the PSM



**Efficient communication** between the work packages and their members is essential and should be done in a **hierarchical way**.

**WP leaders should be kept up to date** on what is being done within the sub-work packages.

We communicate with the **WP leaders** who **are responsible for communicating it with the sub-WP members**.

If you get an announcement or a request from the PSM Office, **please relay to sub-WPs**. E.g. PLATO Week

# Workpackage descriptions

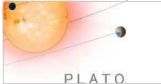


Each WP should have work package descriptions for all phases of the mission:

They include:

- Objectives
- Tasks
- Input
- Dependencies
- Outputs
- Deliverables
- Milestones
- Risks

Development (DEV)  
Operations (OPE)  
Post-Operations (POS)

	<b>PSM WPDs OPERATIONS</b>	Ref: PLATO-UWA-PSM- WPD-002 Issue: 3 Rev.: 10 Date: September 25, 2019 Page: 5/57
---	--------------------------------	---

Specification of Planet Detection Tools		PSM WP 112 000
Leader: Juan <a href="#">Cabrera</a>	Operations phase	04/2024 — 06/2030
Institution: DLR (Germany)		
Key Personnel: J. <a href="#">Cabrera</a> ; NN (DLR)		
<b>Objectives:</b> Coordination and scientific validation of the work of the sub-work packages related to improvements and updates of the planet detection methods. Coordination of the exchange of information among the sub-WP. Coordination of the exchange of information between the sub-WP and the PSM structure. Coordination of the updates of the algorithms and requirements based on real PLATO data.		
<b>Tasks:</b> <ol style="list-style-type: none"><li>1. Liaise with sub-work package leaders</li><li>2. Liaise with Exoplanet coordinator</li><li>3. Responsible for reports and updated algorithms from sub-work packages</li></ol>		
<b>Input:</b> <ol style="list-style-type: none"><li>1. Scientific literature</li><li>2. PLATO Red Book</li><li>3. PLATO performance</li><li>4. PLATO data</li></ol>		
<b>Dependencies:</b> Close interactions foreseen with the WP 111 000; 113 000; 114 000 and sub-WP		
<b>Output:</b> Planet detection updated algorithms and strategies		
<b>Deliverables:</b> Reports from sub-work packages and scientific specifications and updated tools		
<b>Milestones:</b> 09/2025: Finish first scientific validation of algorithms and tools with real PLATO data Until 2030: Continue validation of algorithms Scientific validation of implementation at PDC will be performed as part of the PDC review process. Update scientific specifications according to prior validation results in phase with PDC implementation cycle.		
<b>Risks:</b> Planet detection is a key area for the success of PLATO. Ability and efficiency of planet detection will be impaired without an optimized solution for PLATO data sets.		

# Why update?



The **WP description** will be **used** in the **official PLATO documentation**.

The WP description must be accurate and up to date so that we can agree on **who is responsible** and so we can ensure that **nothing is missed** and that we are covered.

Example: Lightcurve stitching → Light curve stitching group

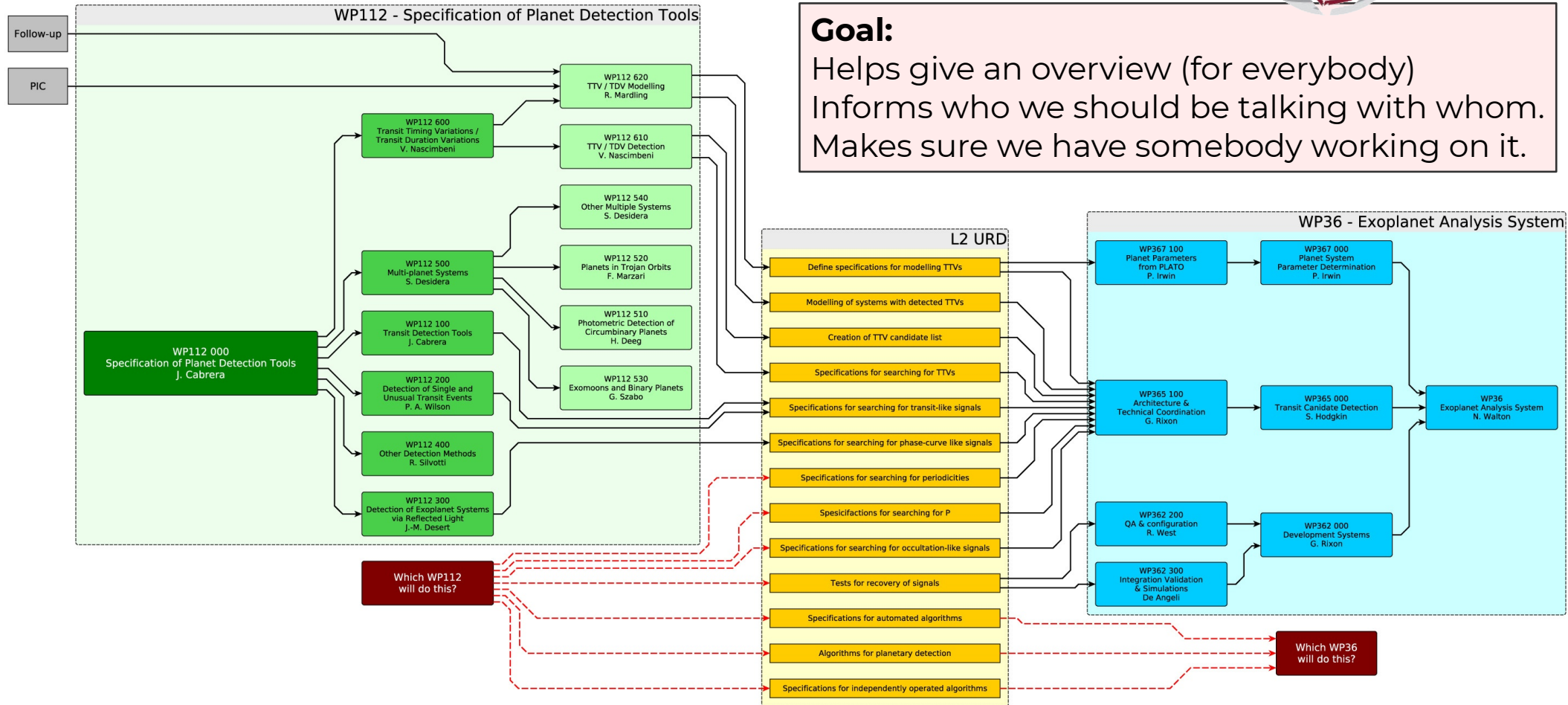
# Architecture design drawings



(in progress)

## Goal:

Helps give an overview (for everybody)  
Informs who we should be talking with whom.  
Makes sure we have somebody working on it.



# Architecture design drawings

(in progress)

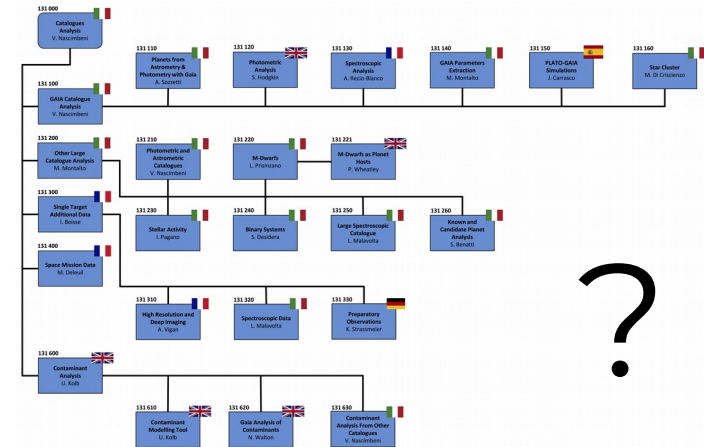


plato

We would like to do this for each PSM work package for each operational phase.

The design drawings will generate awareness and inform us where is work needed.

**Example:** We aim to generate an overview of the PSM inputs which feed into the PIC which is then passed on to the SOC via the PDC.



# How to access the PIC



The PIC is for **internal PLATO Consortium use**.

Want a copy?

## **The way to get access to the PIC:**

- Be a **member** of the PLATO consortium
- Make sure you've signed the **non-disclosure agreement**
- Request PIC by sending an email to:  
[pdcoffice@mps.mpg.de](mailto:pdcoffice@mps.mpg.de)  
(with [psmoffice@warwick.ac.uk](mailto:psmoffice@warwick.ac.uk), [heike.rauer@dlr.de](mailto:heike.rauer@dlr.de),  
[giampaolo.piotto@unipd.it](mailto:giampaolo.piotto@unipd.it) and [paola.marrese@ssdc.asi.it](mailto:paola.marrese@ssdc.asi.it) in CC)

