

# Universal Blacksmith



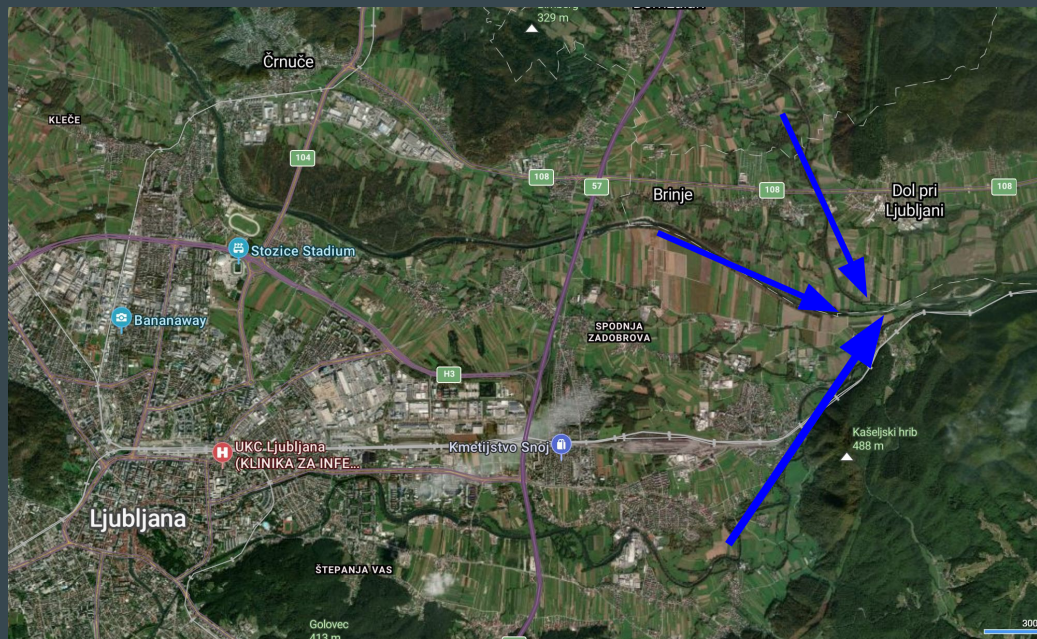
What metals reveal about galaxies' histories

Lucas Kimmig

# Dragons Team in Ljubljana

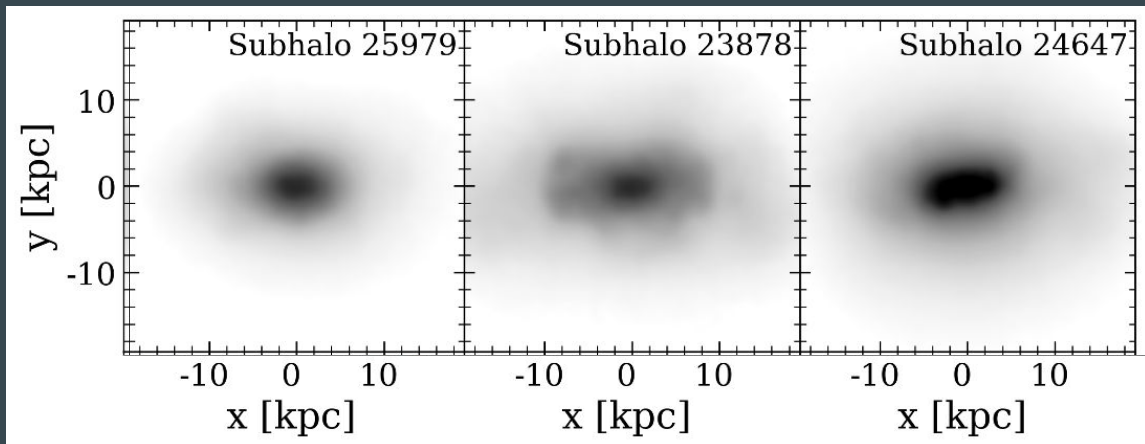


# Dragons Team in Ljubljana



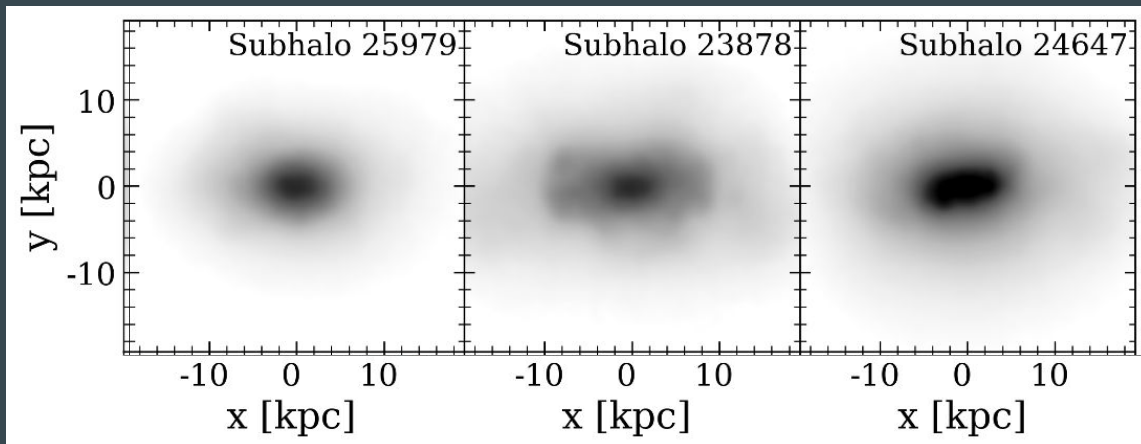
# A Tale of Three Ellipticals

# Three Ellipticals at $z=0$



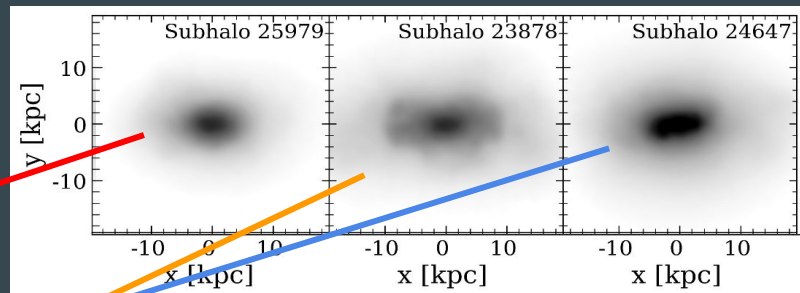
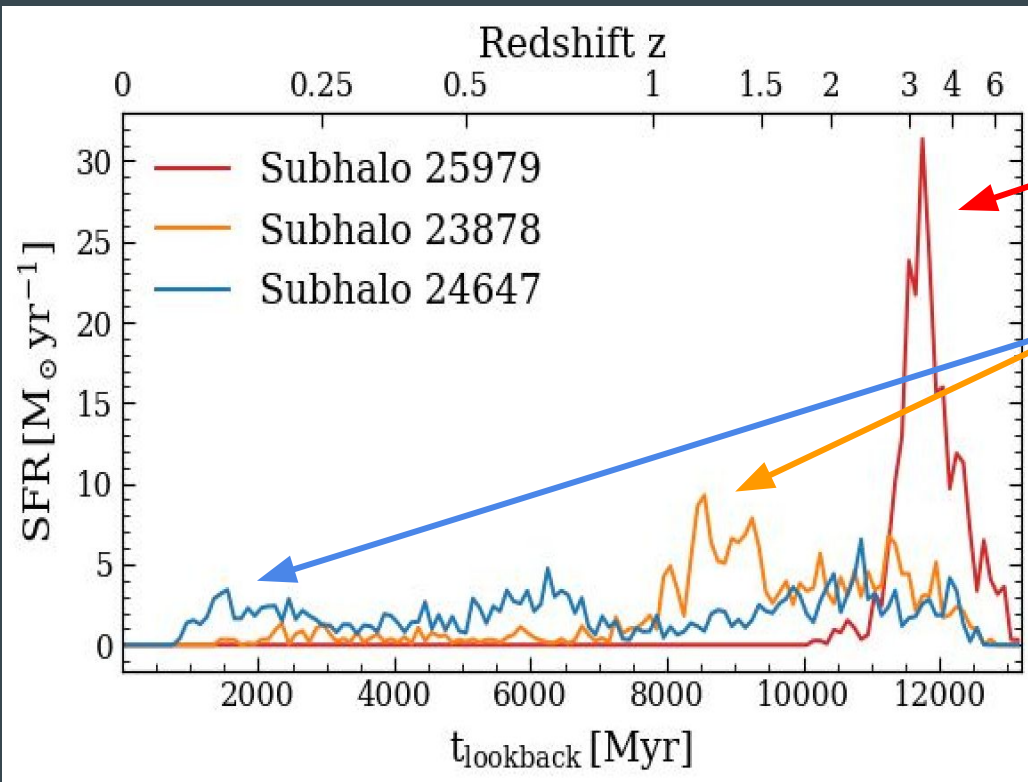
$M_h [10^{11} M_\odot]$	3.14	5.48	4.4
$M_* [10^{10} M_\odot]$	1.36	1.39	1.42
$r_{1/2,*} [\text{kpc}]$	2.27	2.97	2.3
$[Z]$	0.191	-0.0111	0.0662

# Three Ellipticals at $z=0$

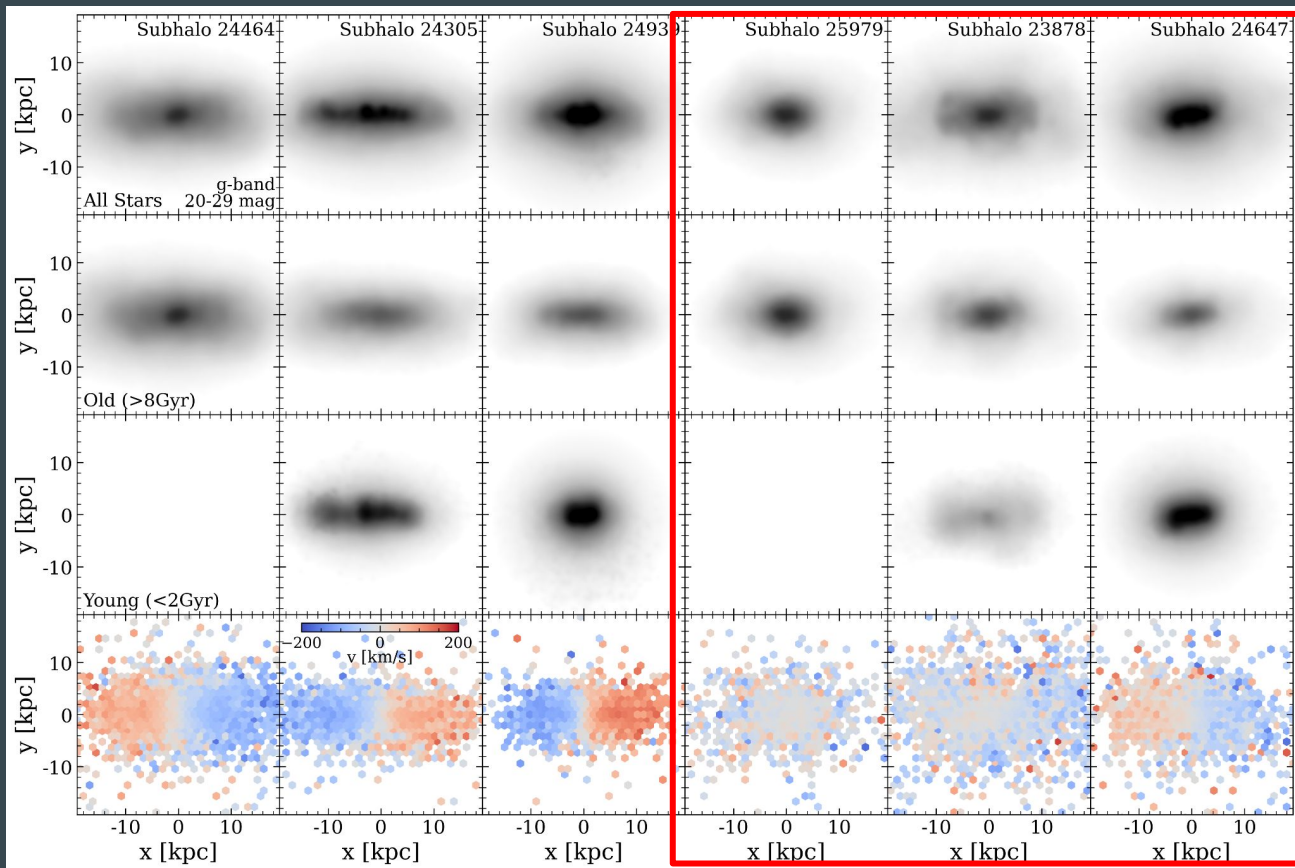


$M_h [10^{11} M_\odot]$	3.14	5.48	4.4
$M_* [10^{10} M_\odot]$	1.36	1.39	1.42
$r_{1/2,*} [\text{kpc}]$	2.27	2.97	2.3
$[Z]$	0.191	-0.0111	0.0662
$\langle z \rangle_*$	3.42	1.44	0.757

# Three Ellipses at $z=0$



# Three Ellipticals at $z=0$



Total

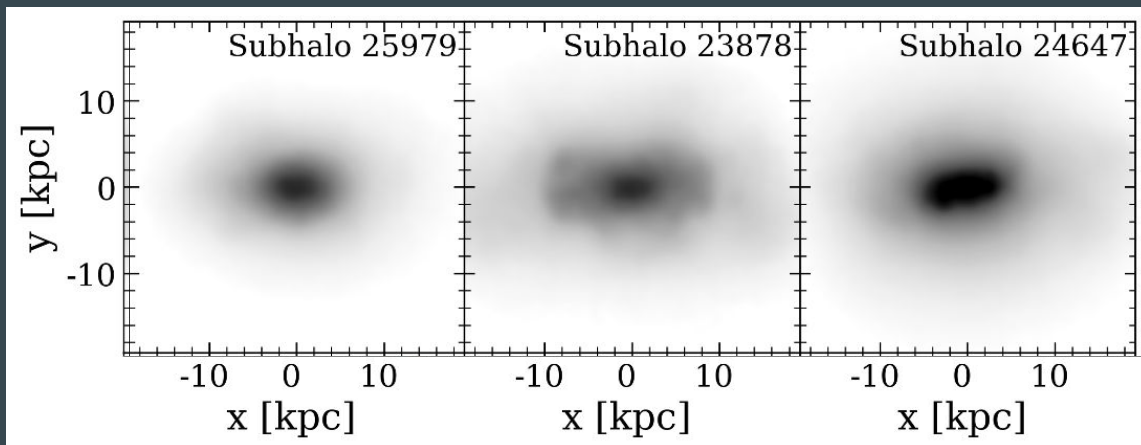
Old

Young

Kimmig et al., in prep

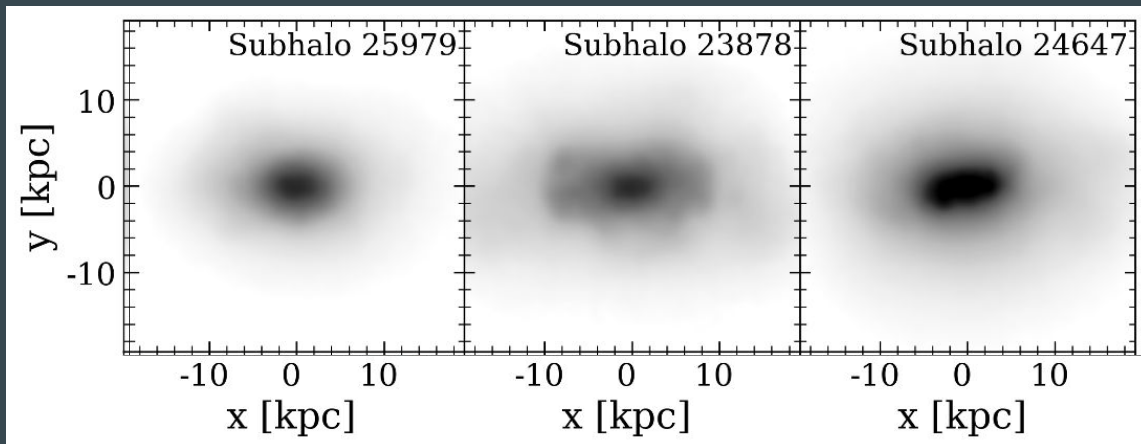


# Three Ellipticals at $z=0$



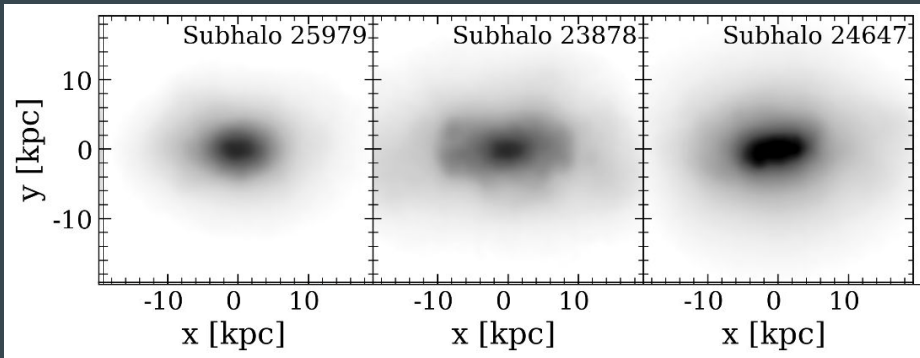
$M_h [10^{11} M_\odot]$	3.14	5.48	4.4
$M_* [10^{10} M_\odot]$	1.36	1.39	1.42
$r_{1/2,*} [\text{kpc}]$	2.27	2.97	2.3
$[Z]$	0.191	-0.0111	0.0662
$\langle z \rangle_*$	3.42	1.44	0.757

# Three Ellipticals at $z=0$

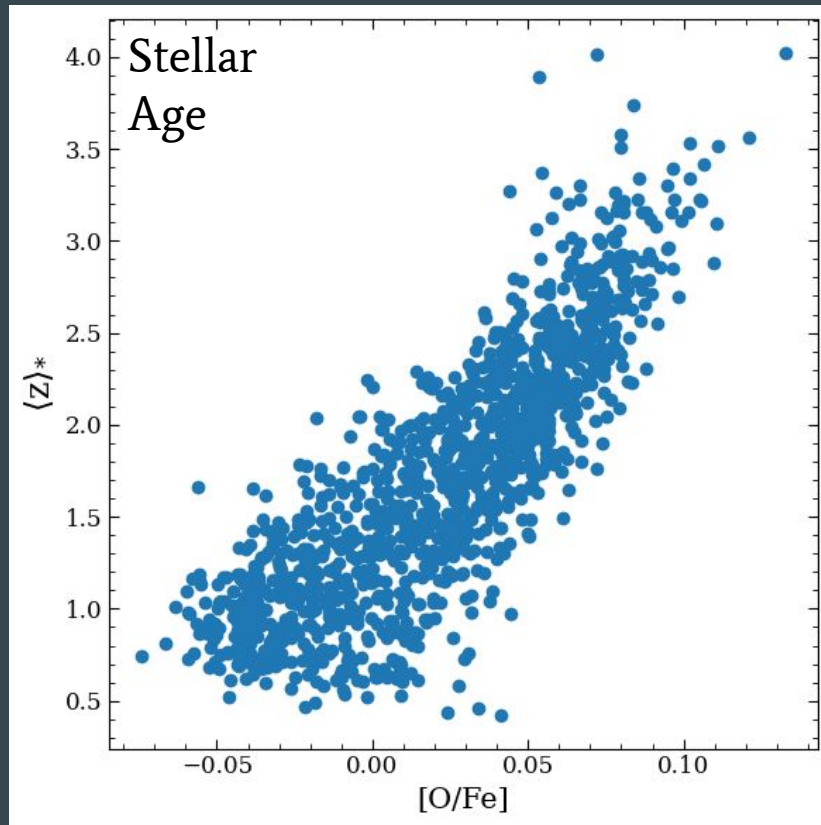


$M_h [10^{11} M_\odot]$	3.14	5.48	4.4
$M_* [10^{10} M_\odot]$	1.36	1.39	1.42
$r_{1/2,*} [\text{kpc}]$	2.27	2.97	2.3
$[Z]$	0.191	-0.0111	0.0662
$\langle z \rangle_*$	3.42	1.44	0.757
$[O/Fe]$	0.106	-0.0234	-0.0464

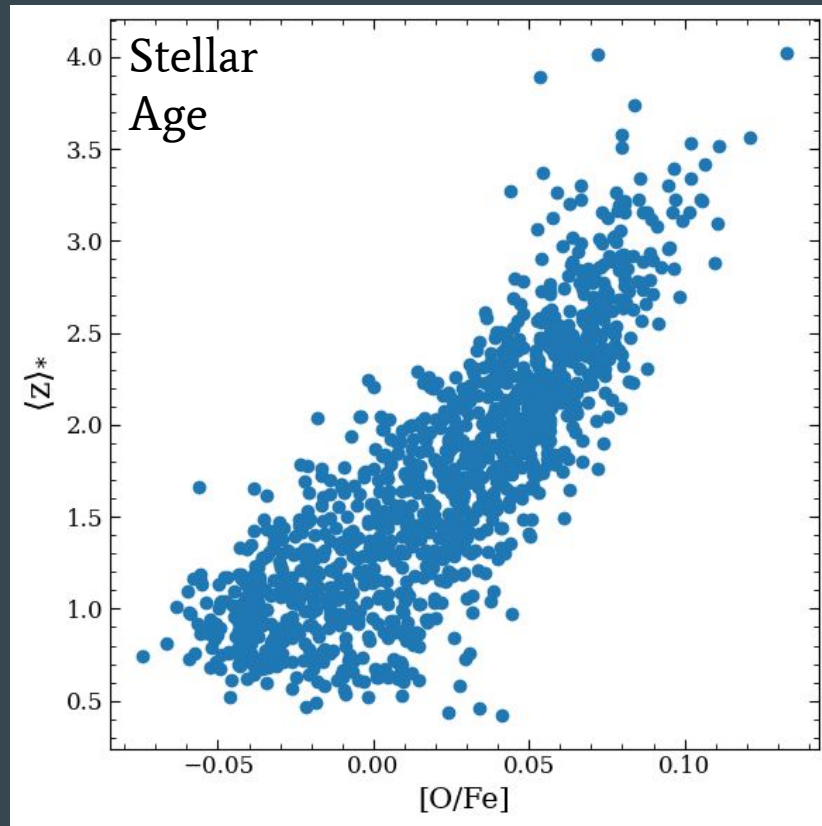
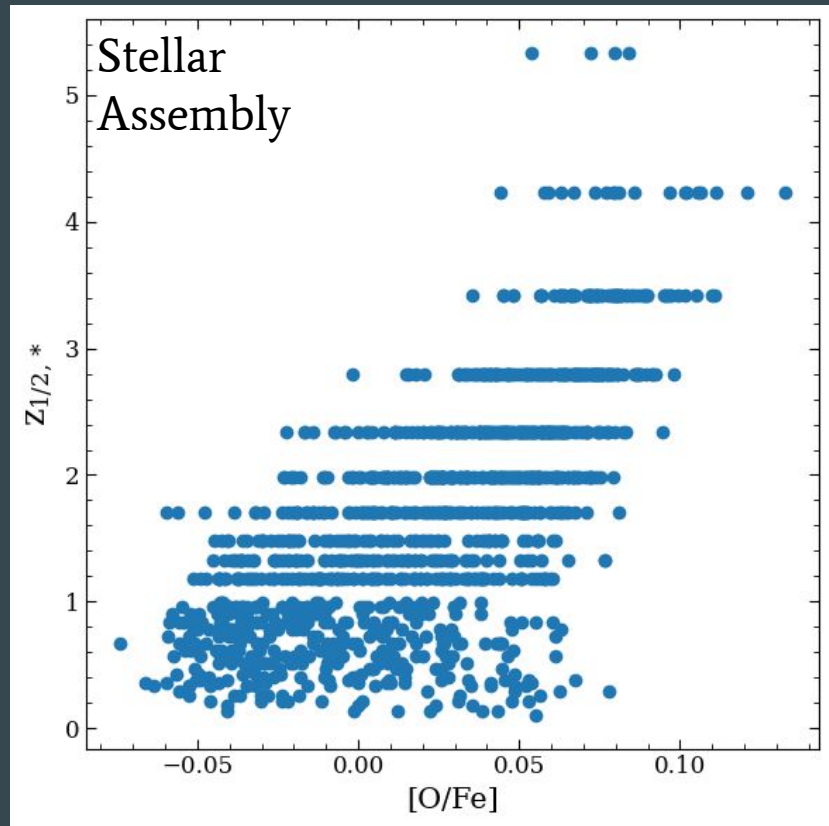
# Three Ellipticals at $z=0$



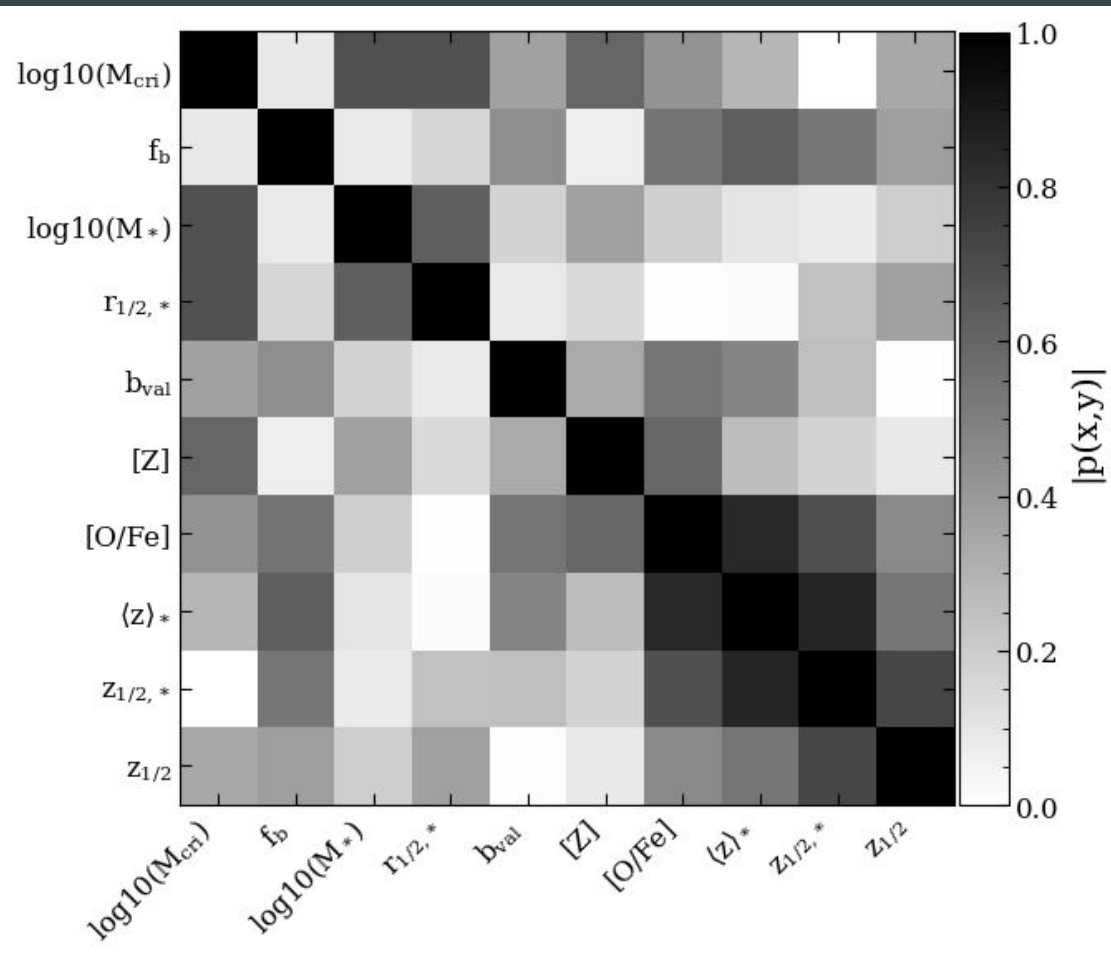
$M_h [10^{11} M_\odot]$	3.14	5.48	4.4
$M_* [10^{10} M_\odot]$	1.36	1.39	1.42
$r_{1/2,*} [\text{kpc}]$	2.27	2.97	2.3
$[Z]$	0.191	-0.0111	0.0662
$\langle z \rangle_*$	3.42	1.44	0.757
$[O/Fe]$	0.106	-0.0234	-0.0464

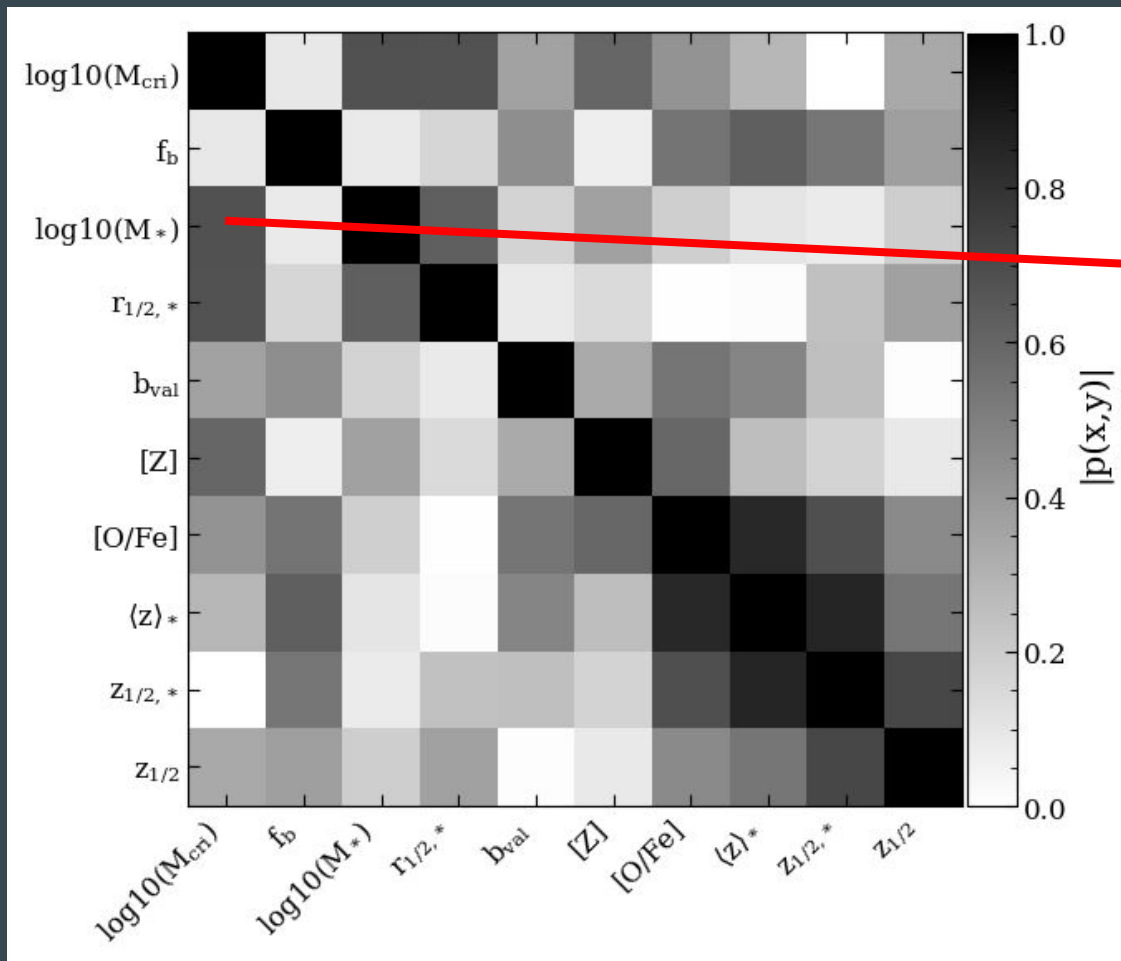


# Three Ellipticals at $z=0$

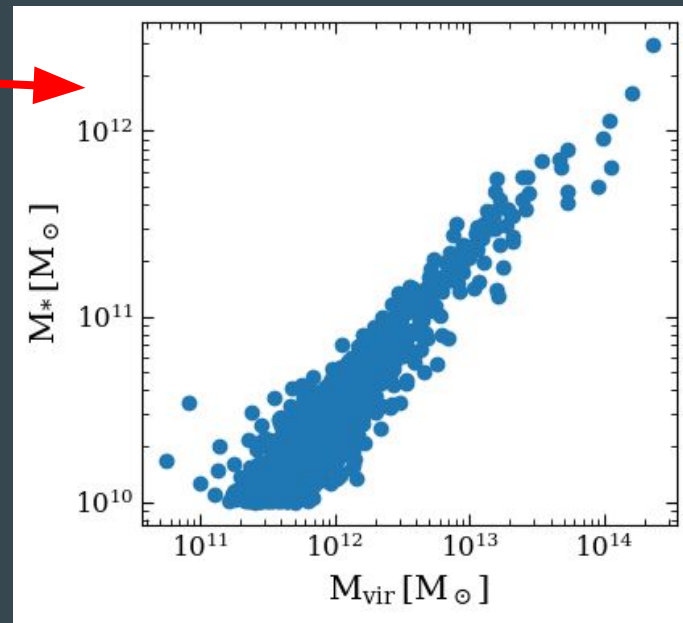


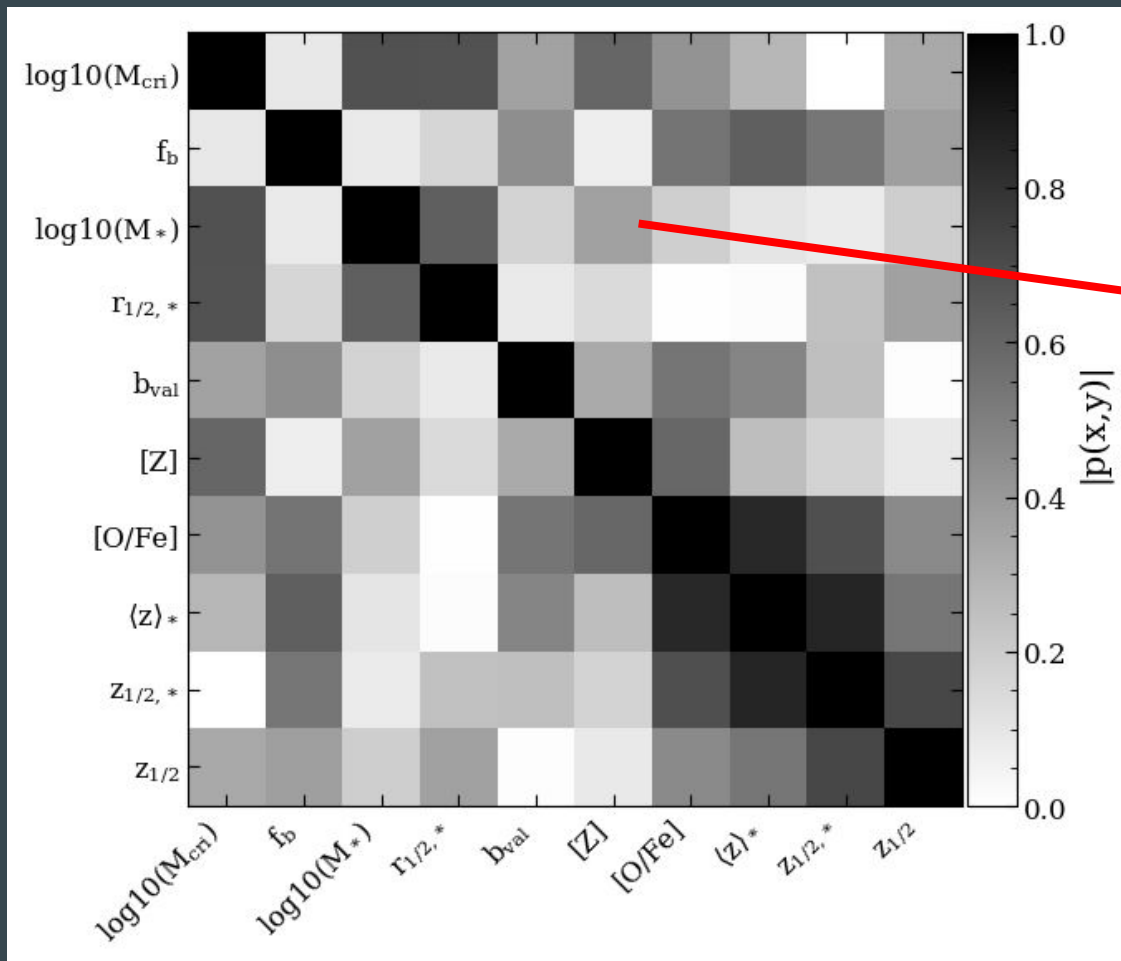
# How Good Is Alpha?



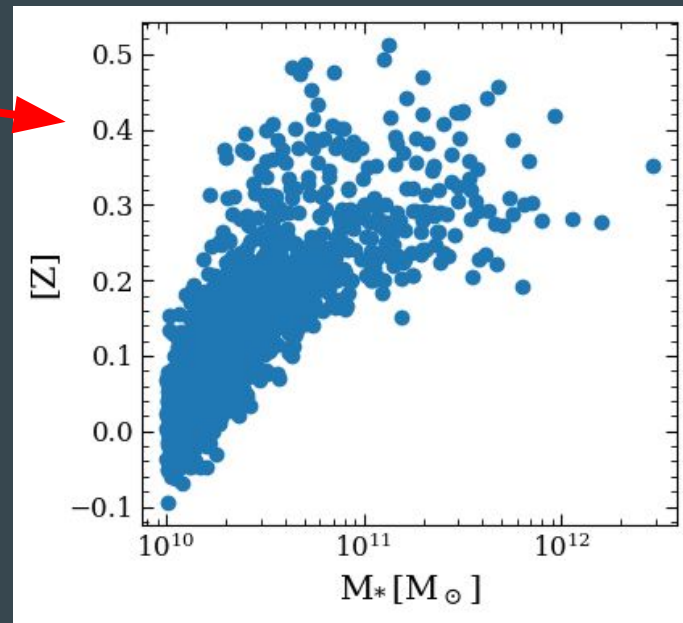


# How Good Is Alpha?

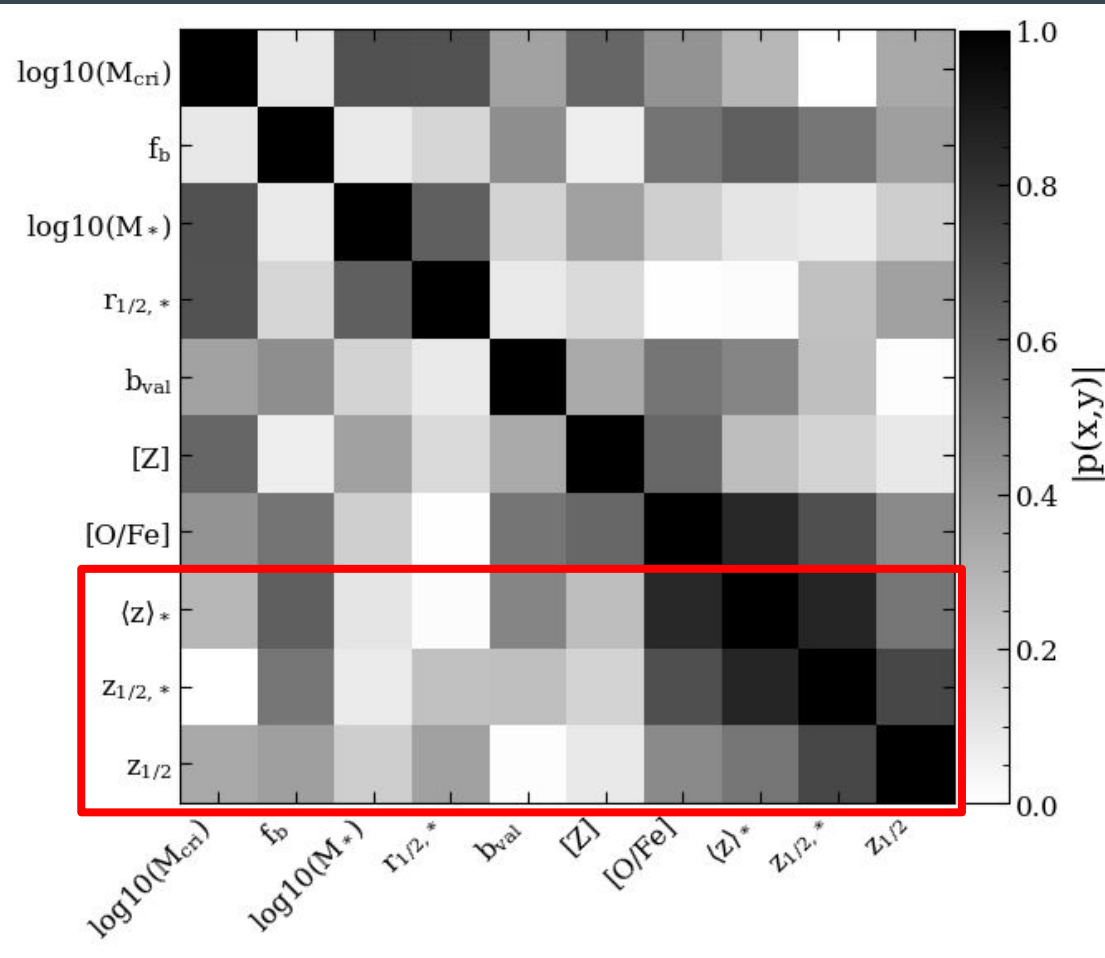




How Good  
Is Alpha?

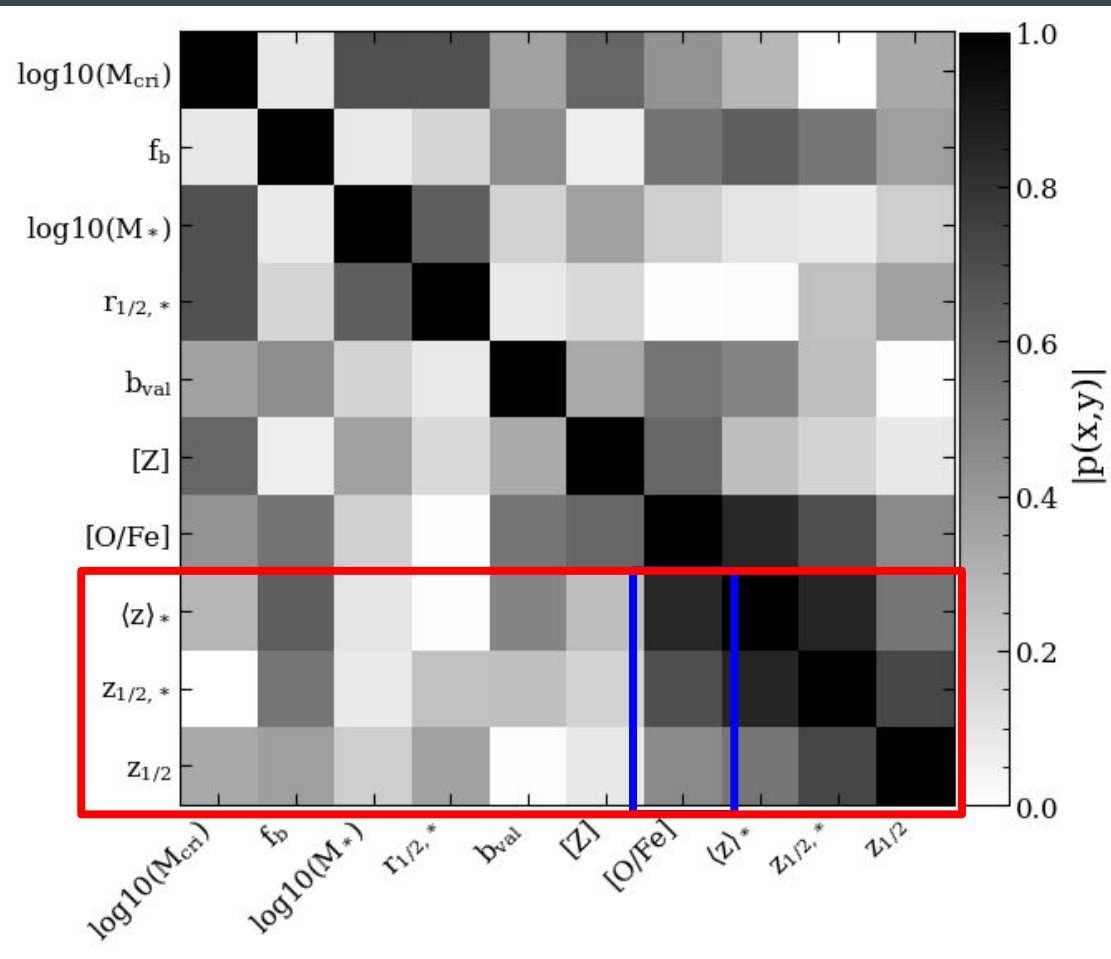


# How Good Is Alpha?

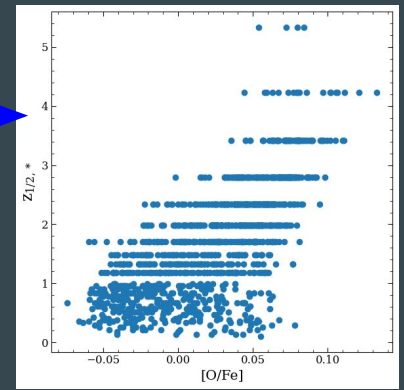
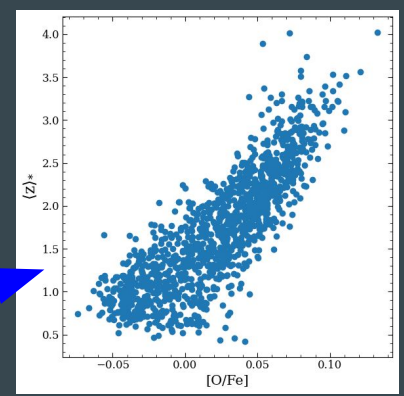
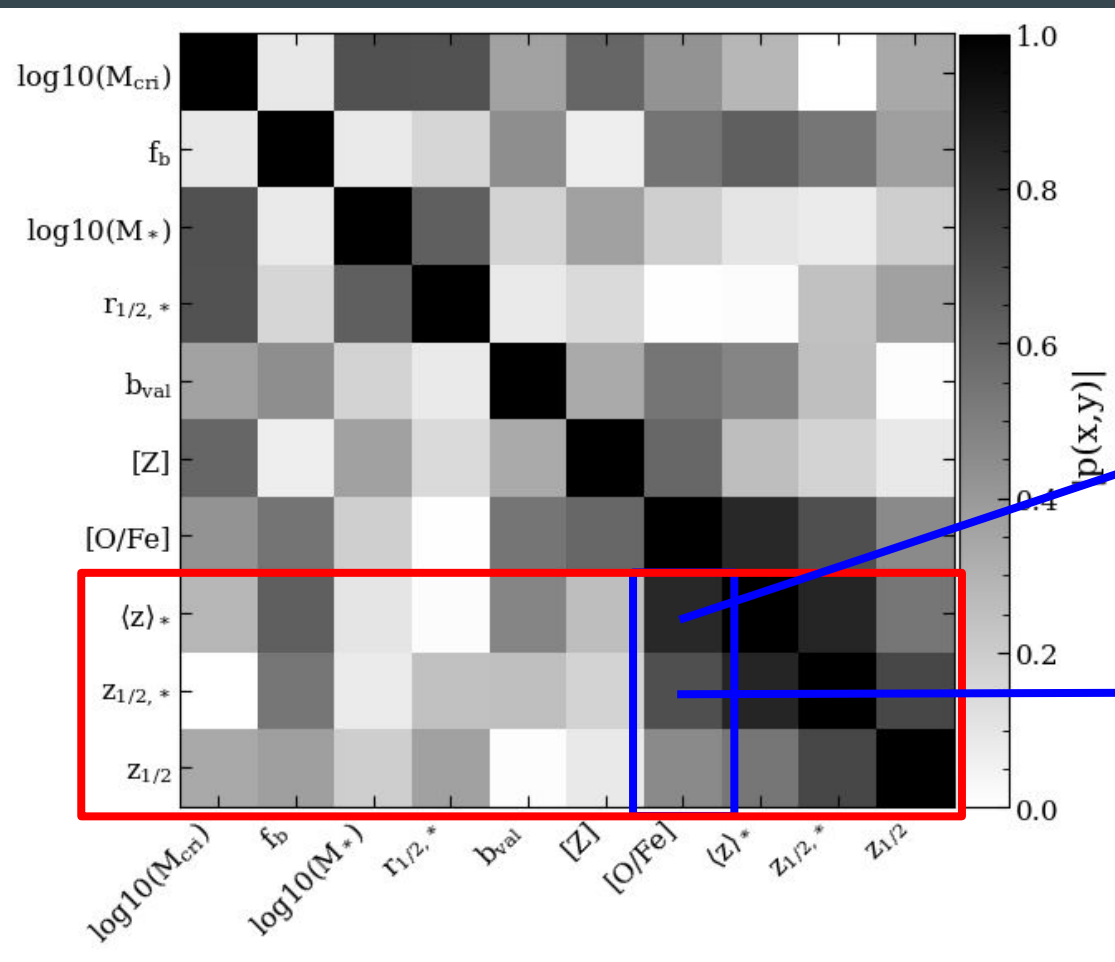




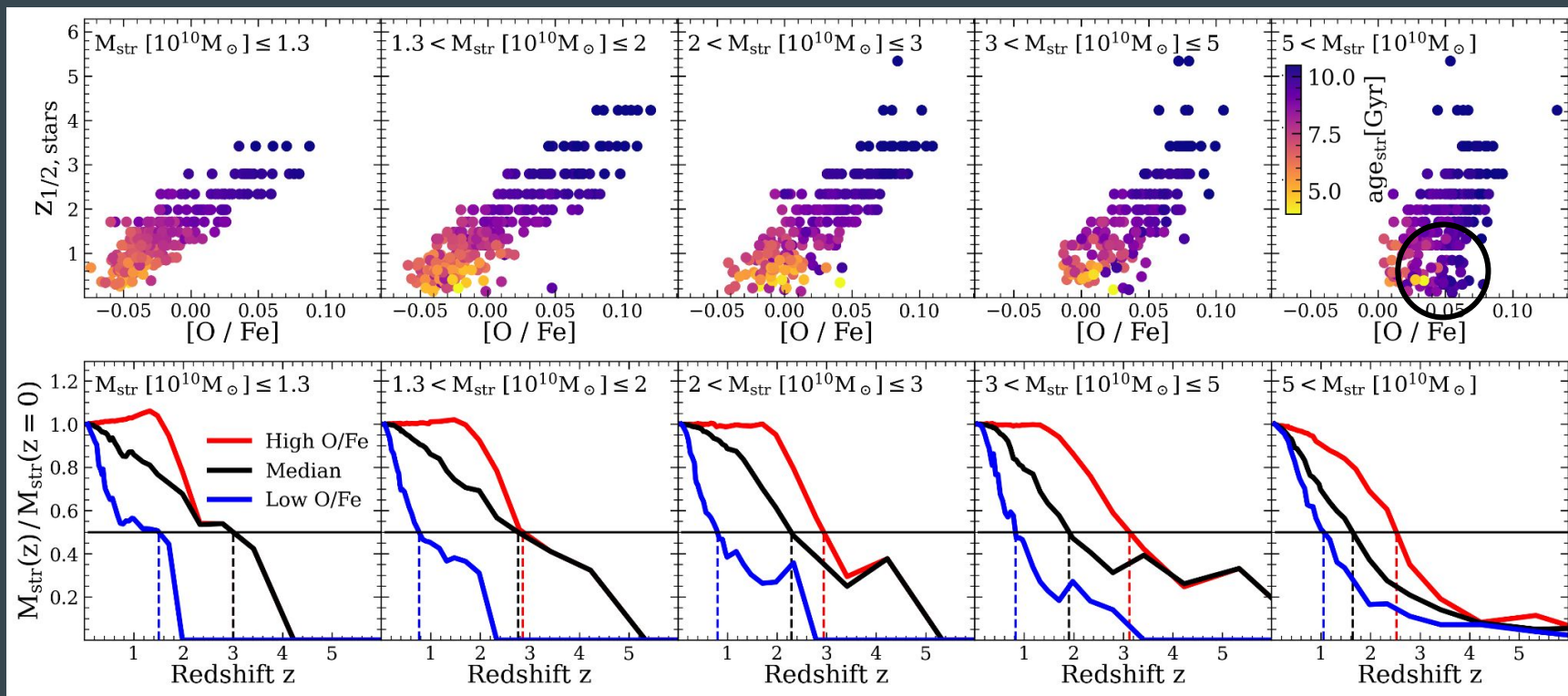
# How Good Is Alpha?



# How Good Is Alpha?



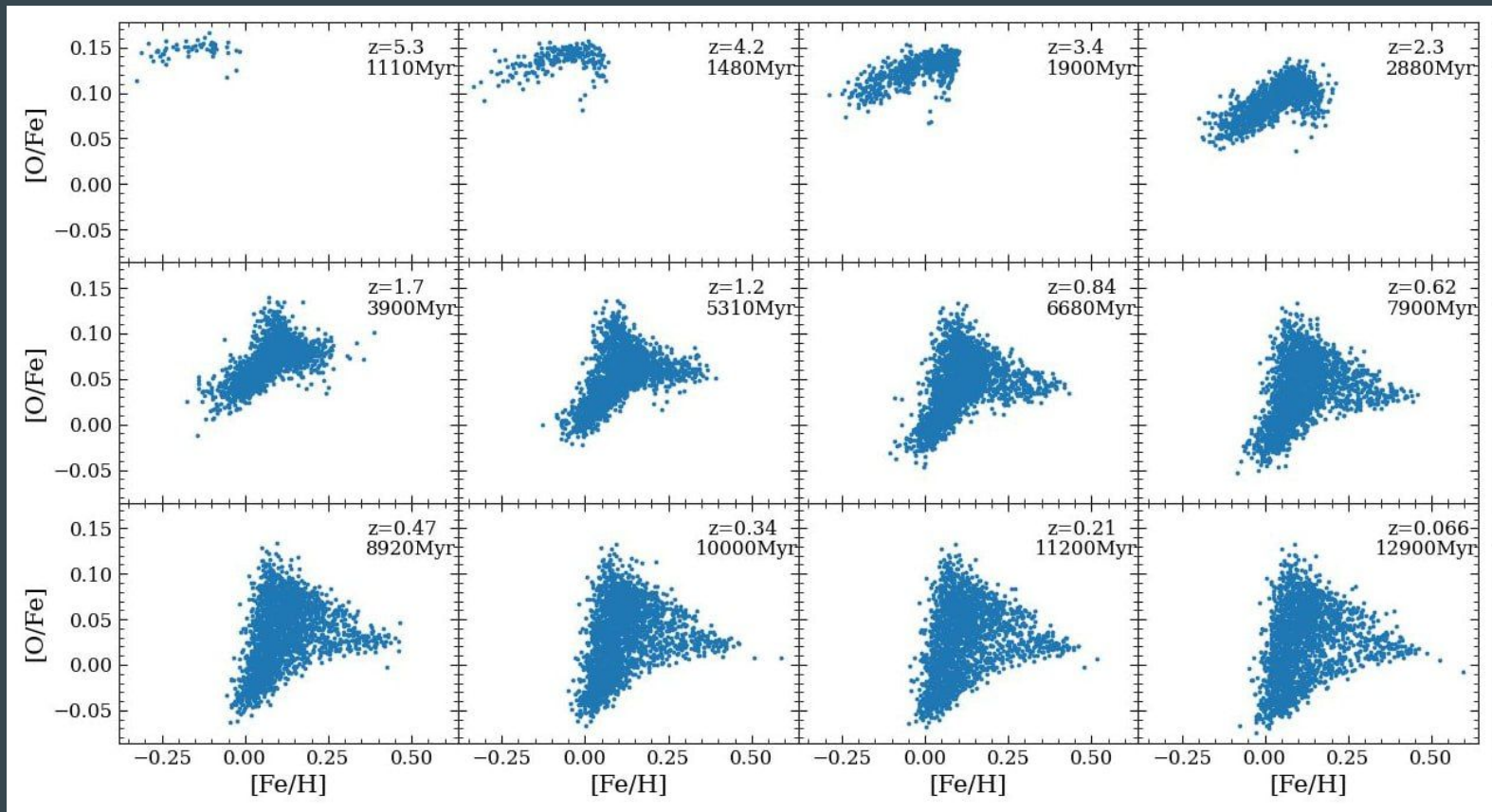
# Stellar Assembly



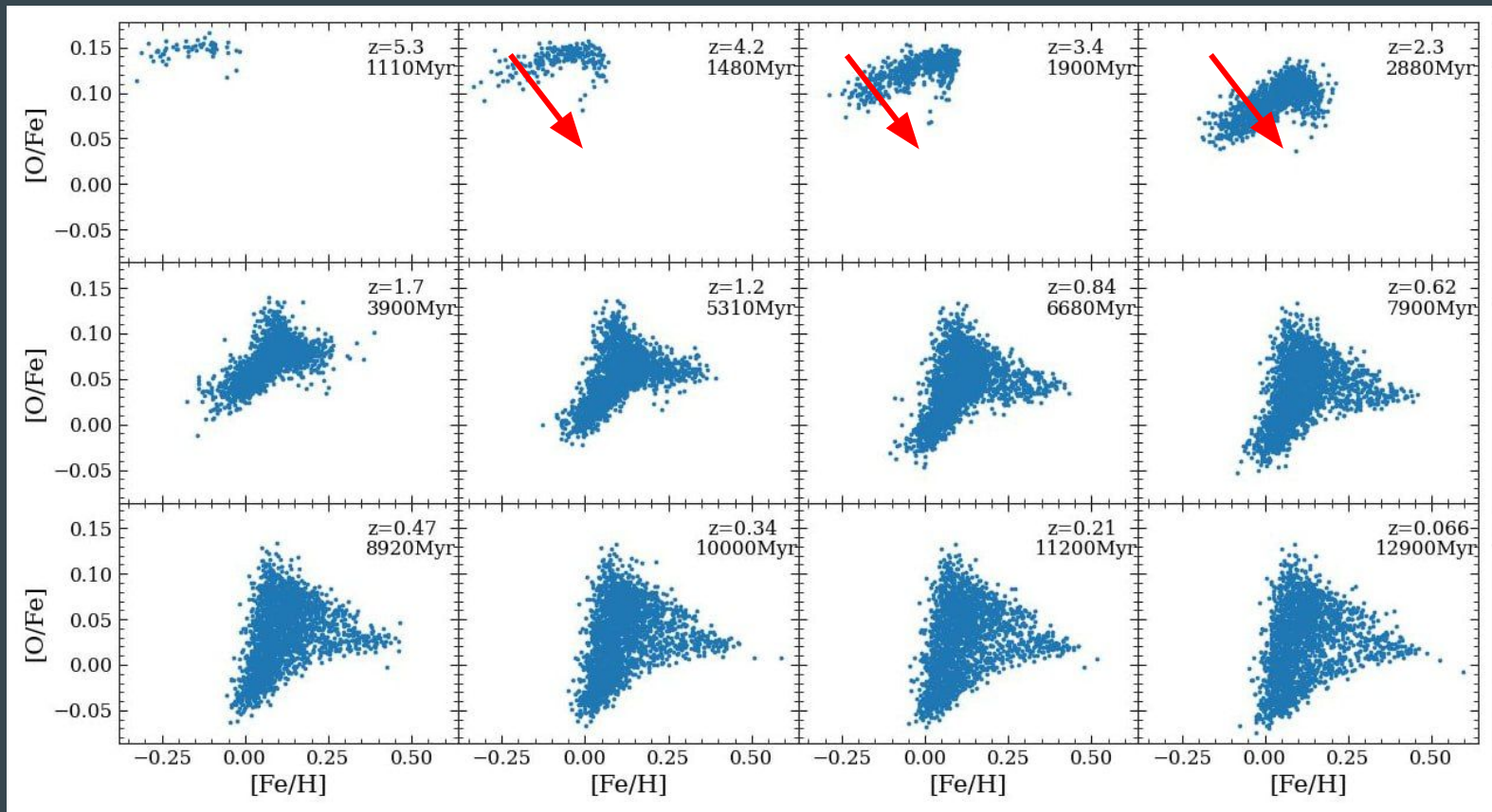
**Alpha Elements Trace Age + Assembly**

**Alpha Elements Trace Age + Assembly  
But Why?**

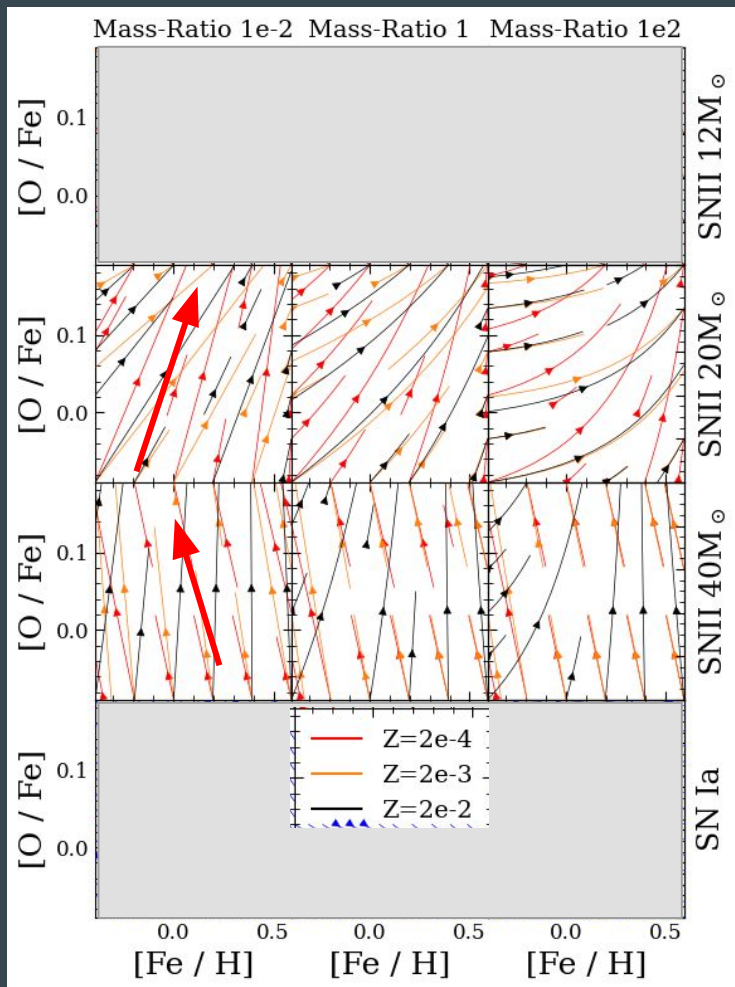
# Global Enrichment Through Time:



# Global Enrichment Through Time:



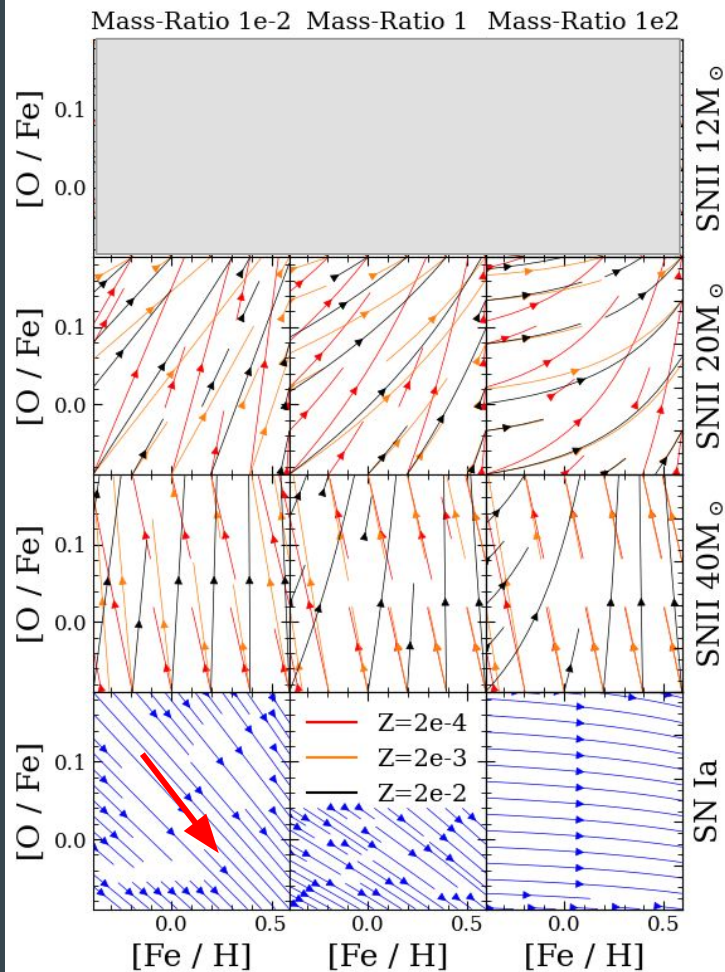
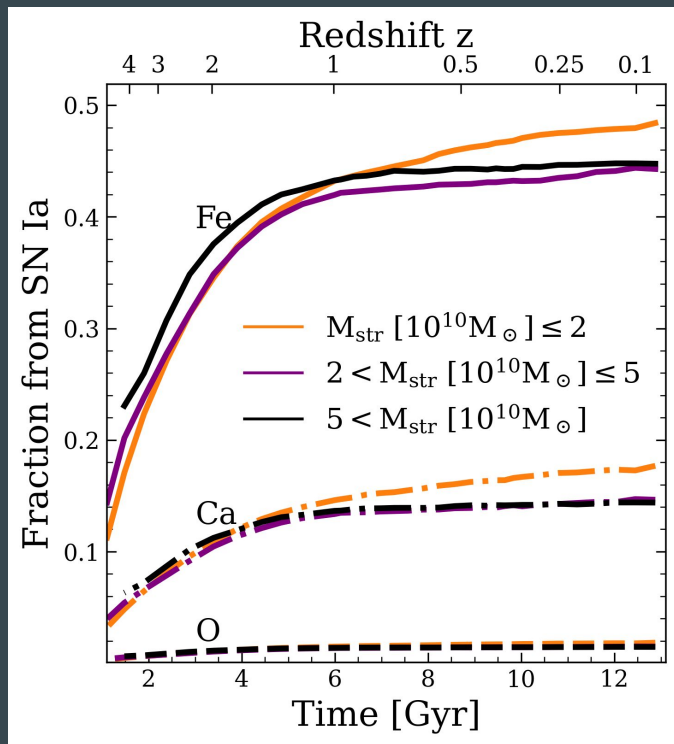
# Global Enrichment Through Time:



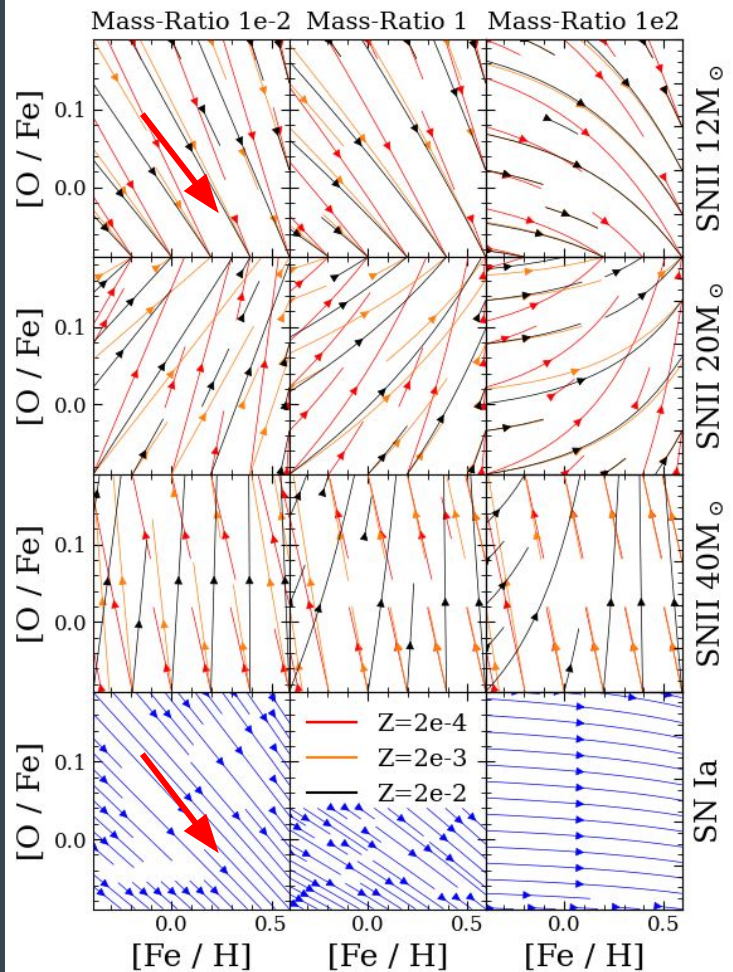
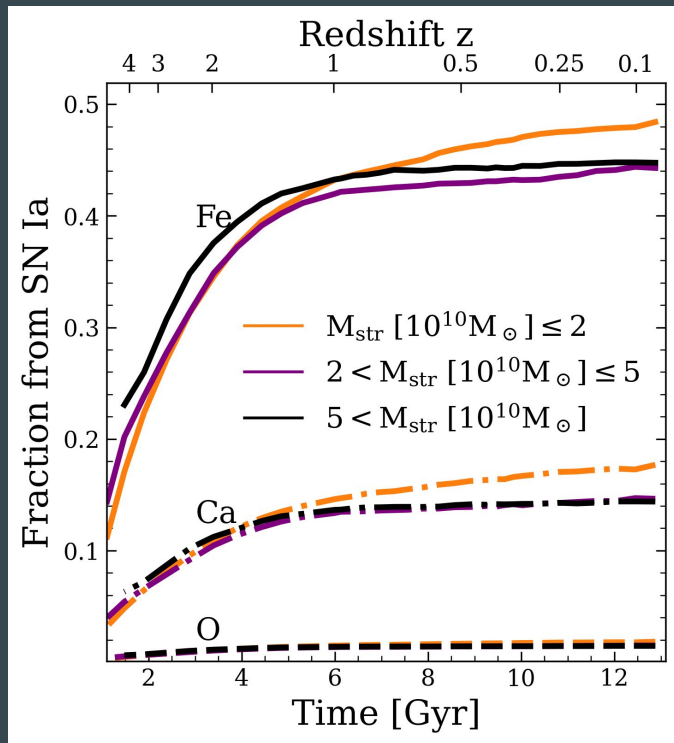
Kimmig et al., in prep



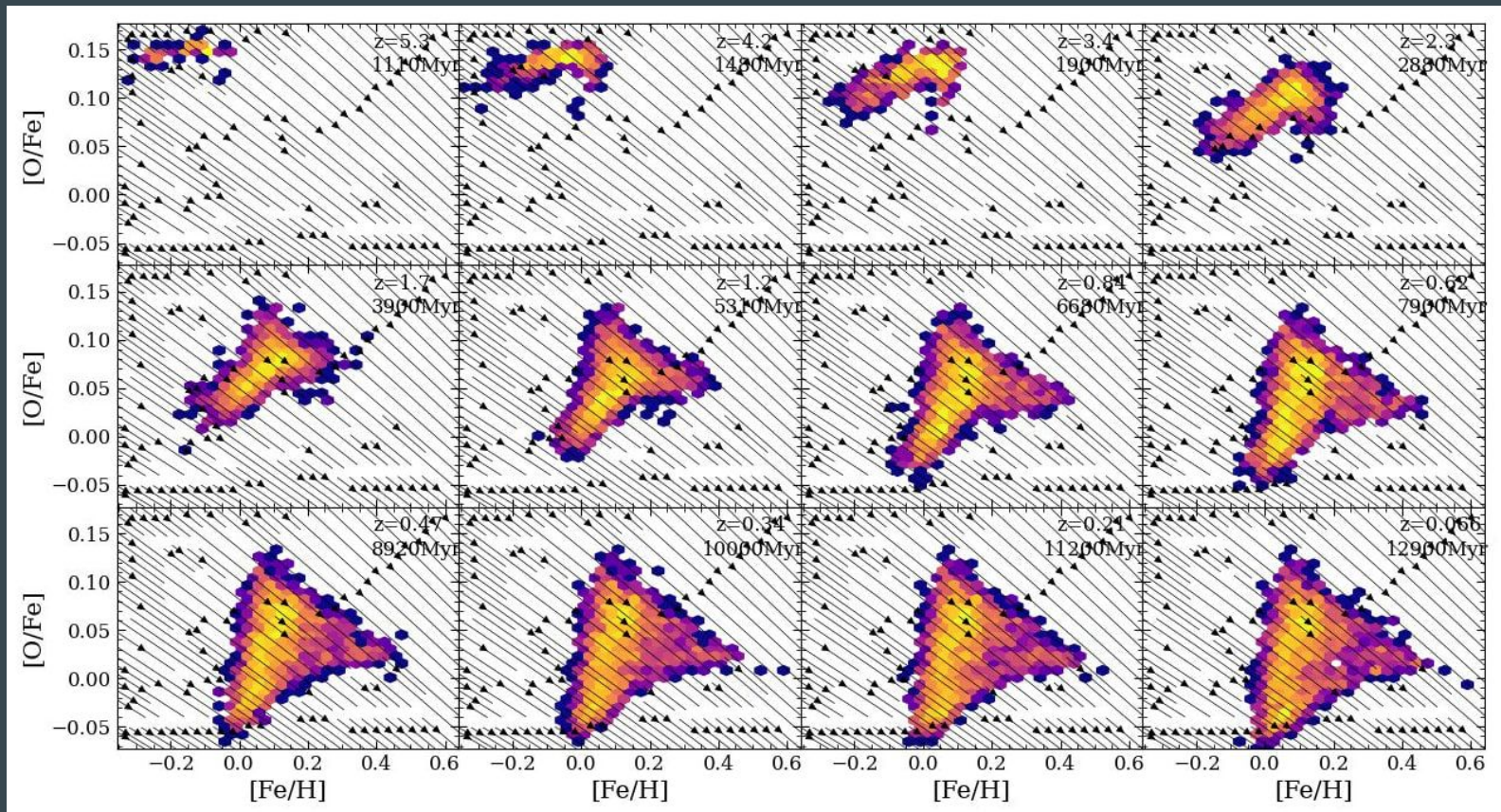
# Global Enrichment Through Time:



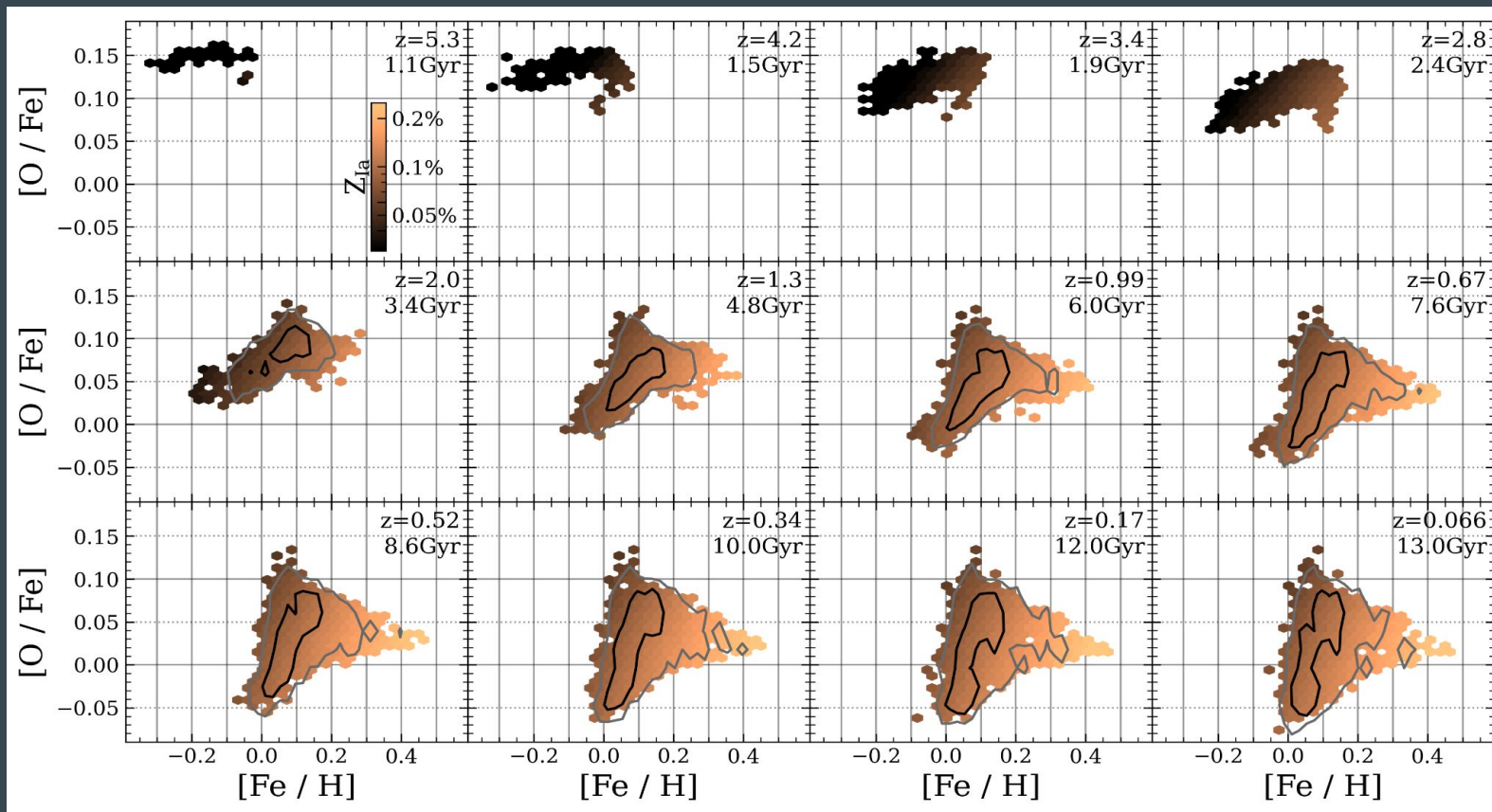
# Global Enrichment Through Time:



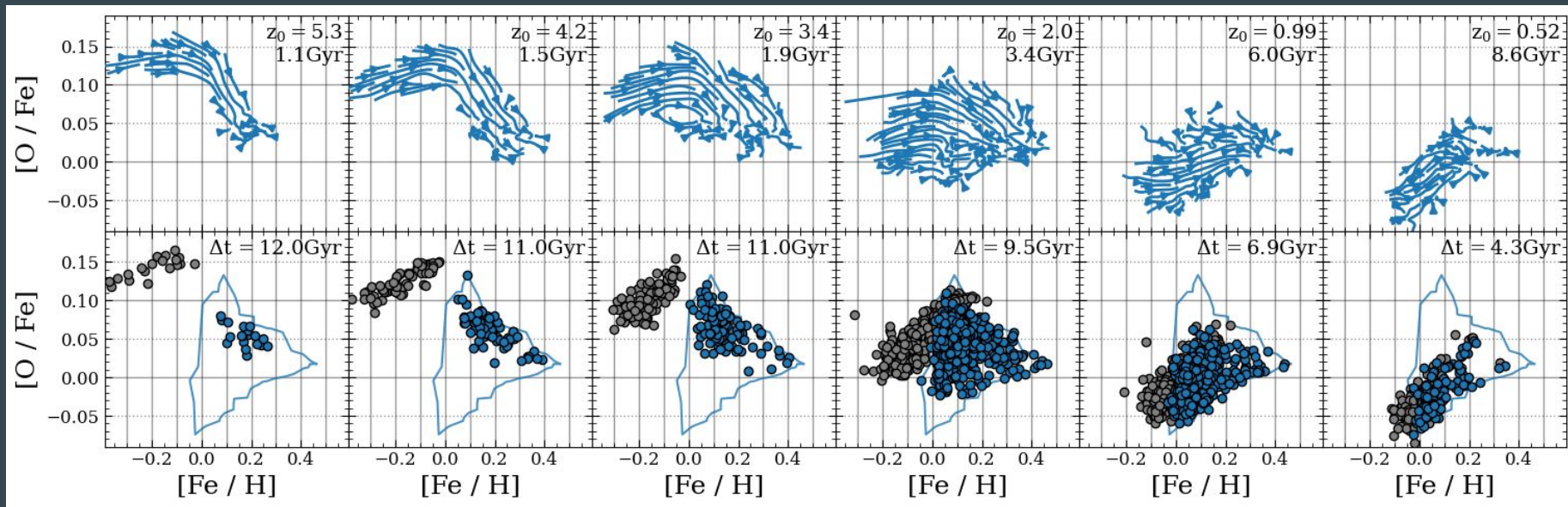
# Global Enrichment Through Time:



# Global Enrichment Through Time:

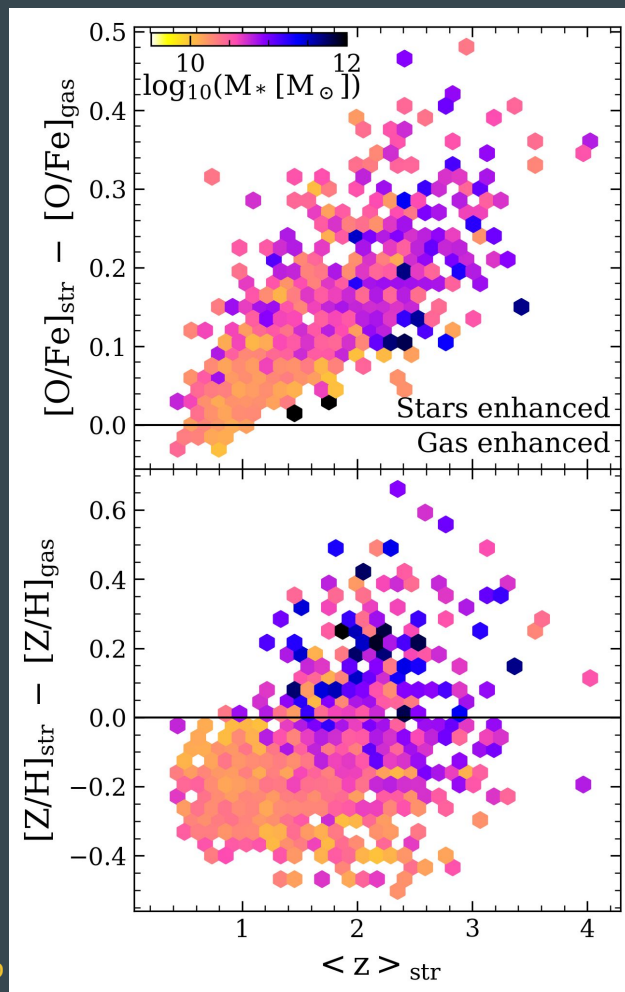


# Evo

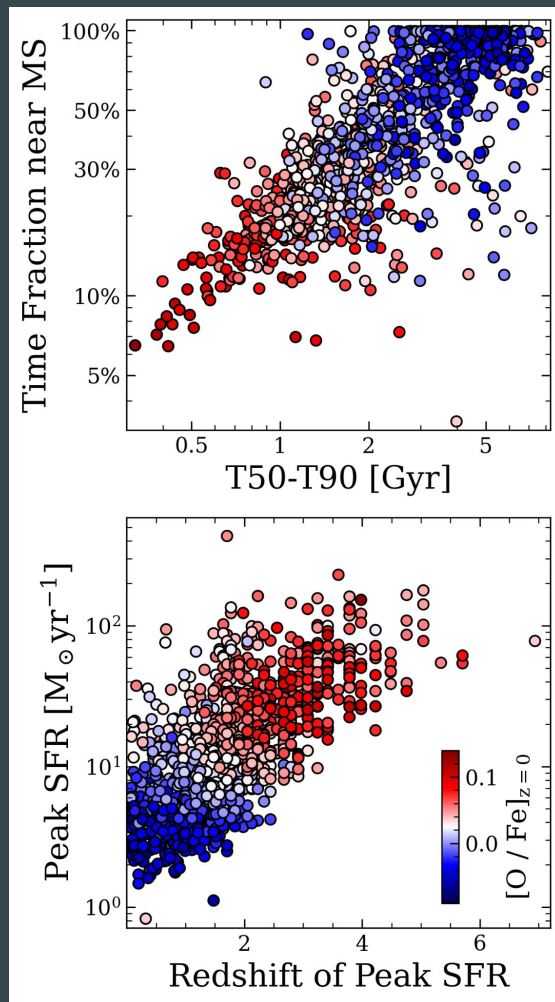
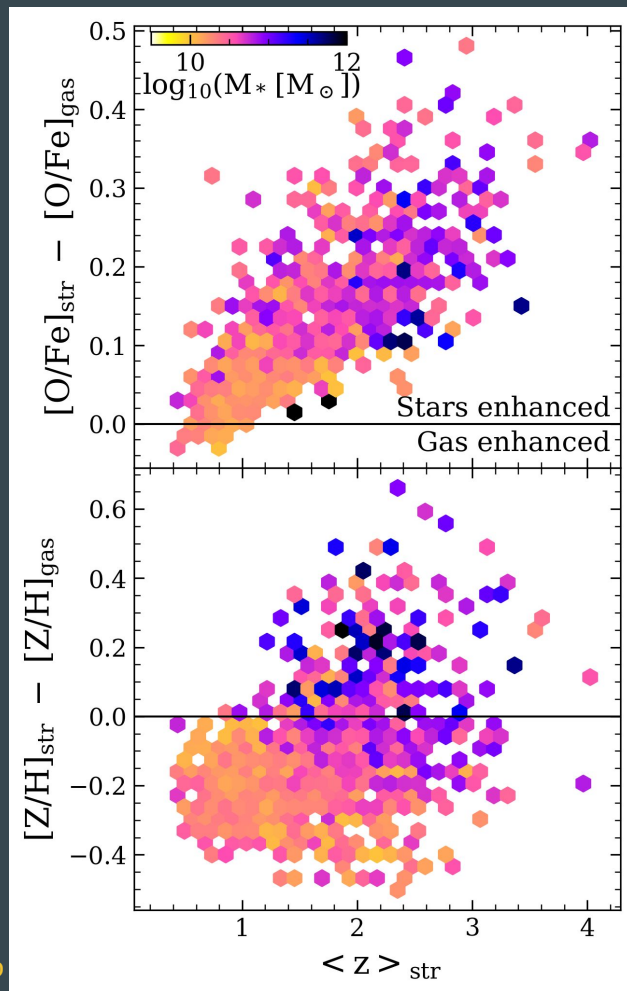


Kimmig et al., in prep

# Consequences

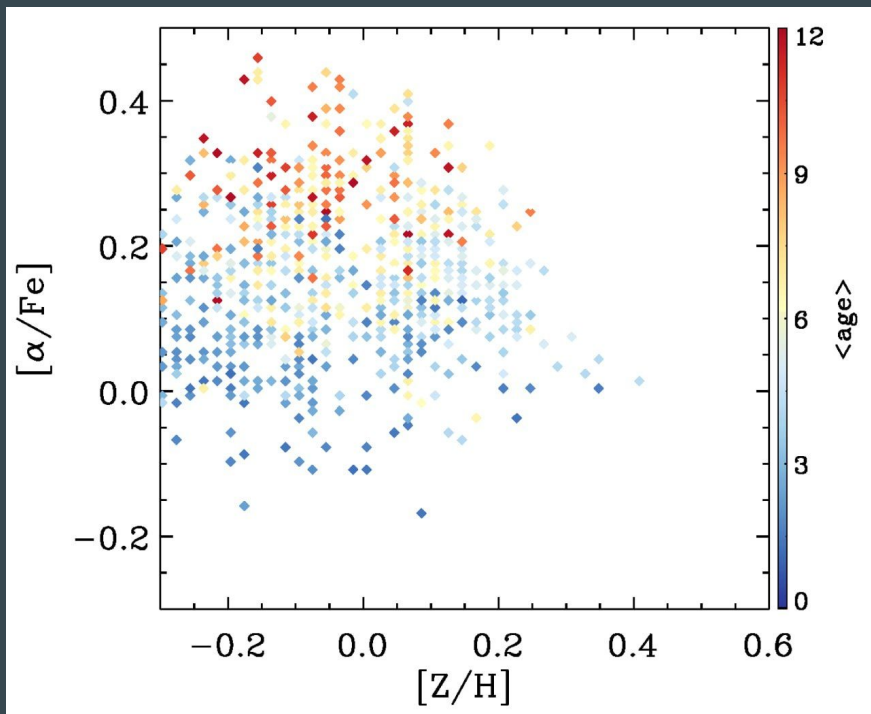


# Consequences

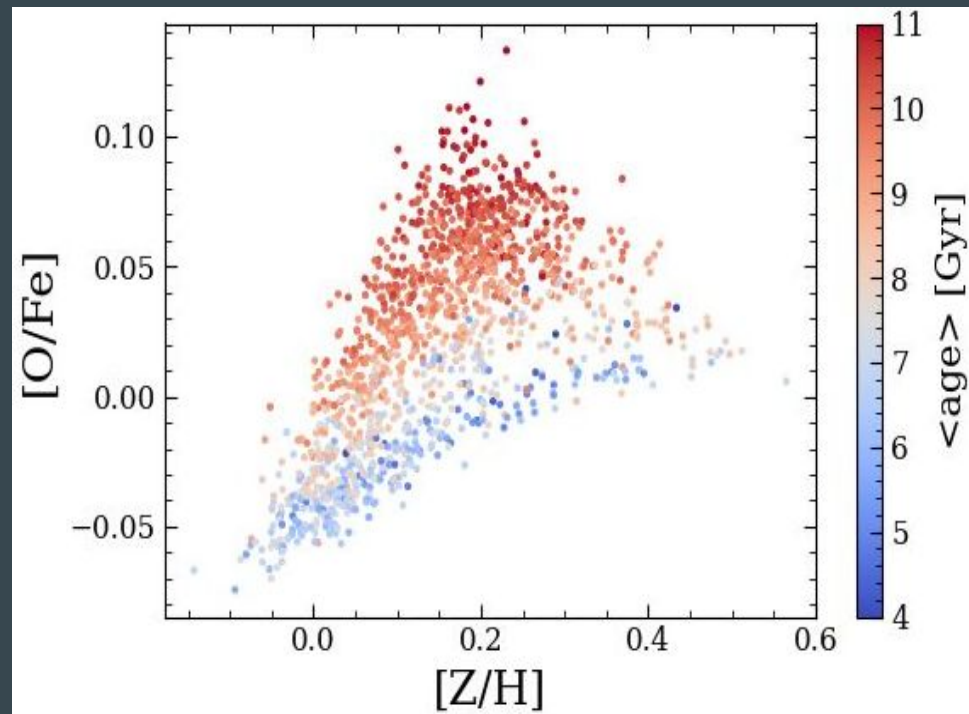


# Comparing With Observations

SAMI (Scott+17)



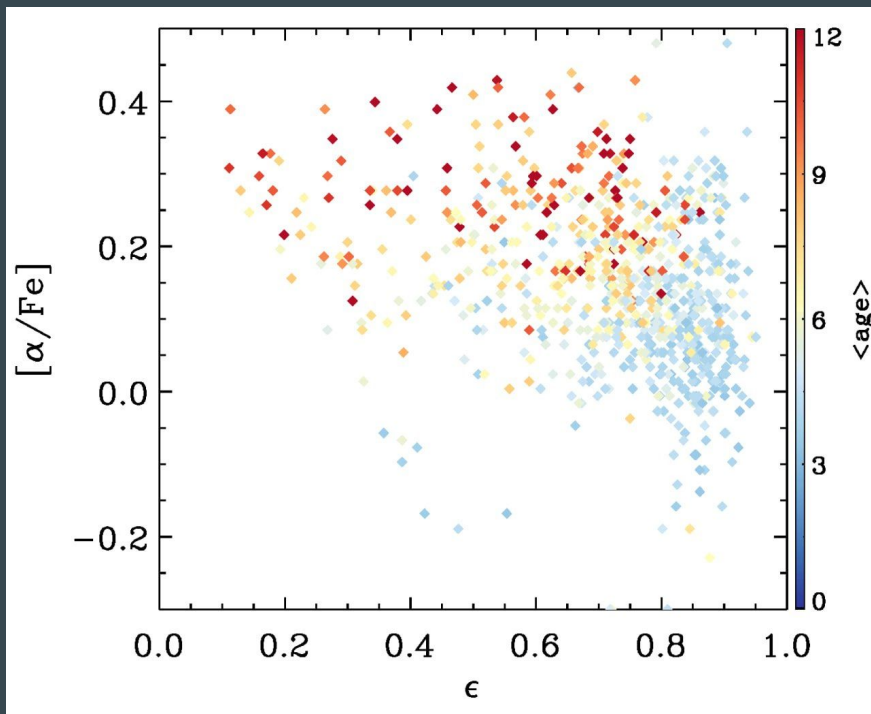
Magneticum



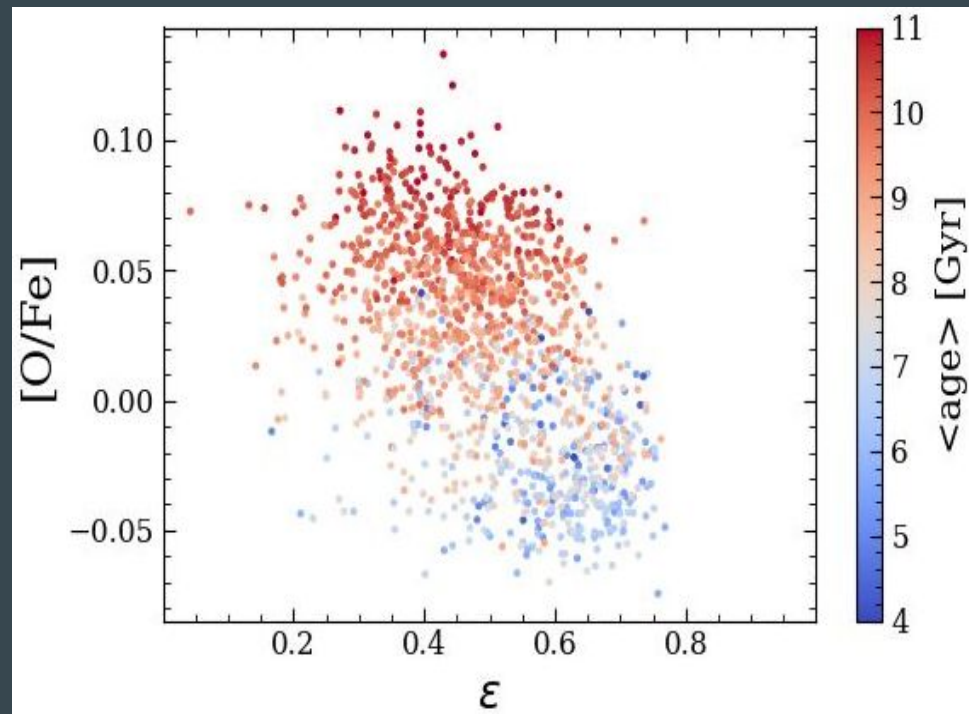


# Comparing With Observations

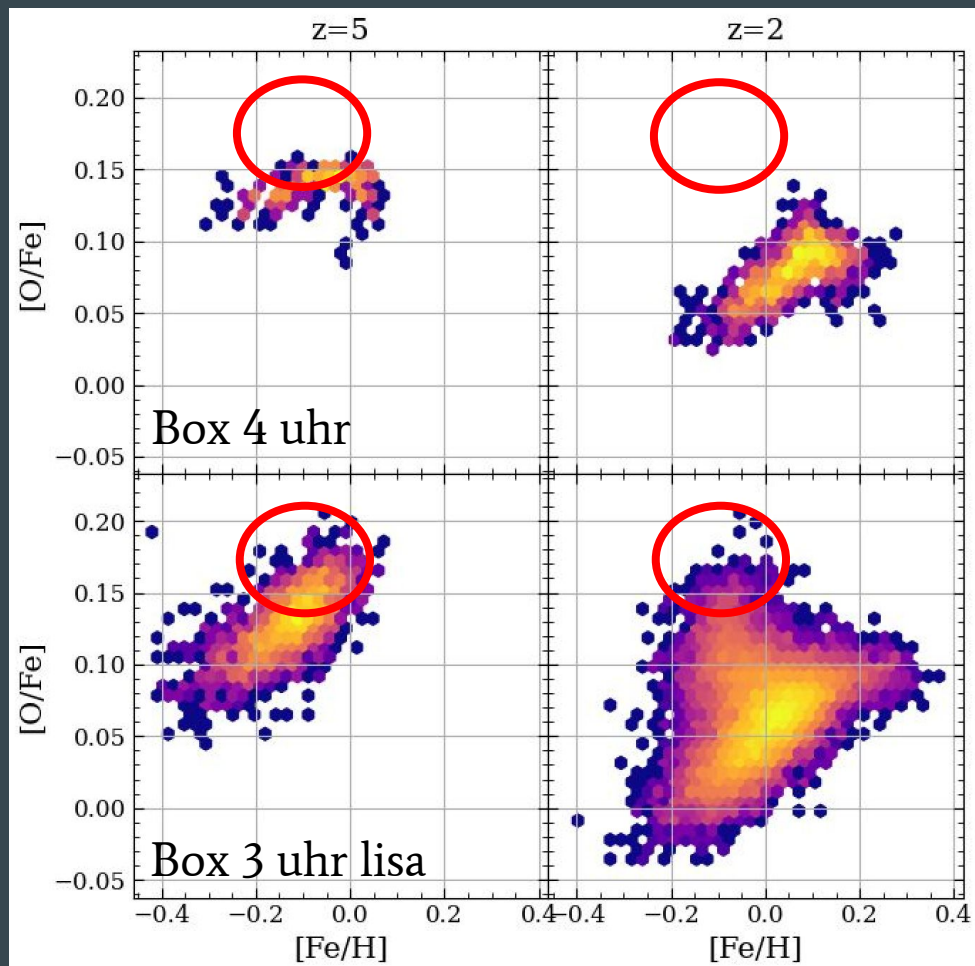
SAMI (Scott+17)



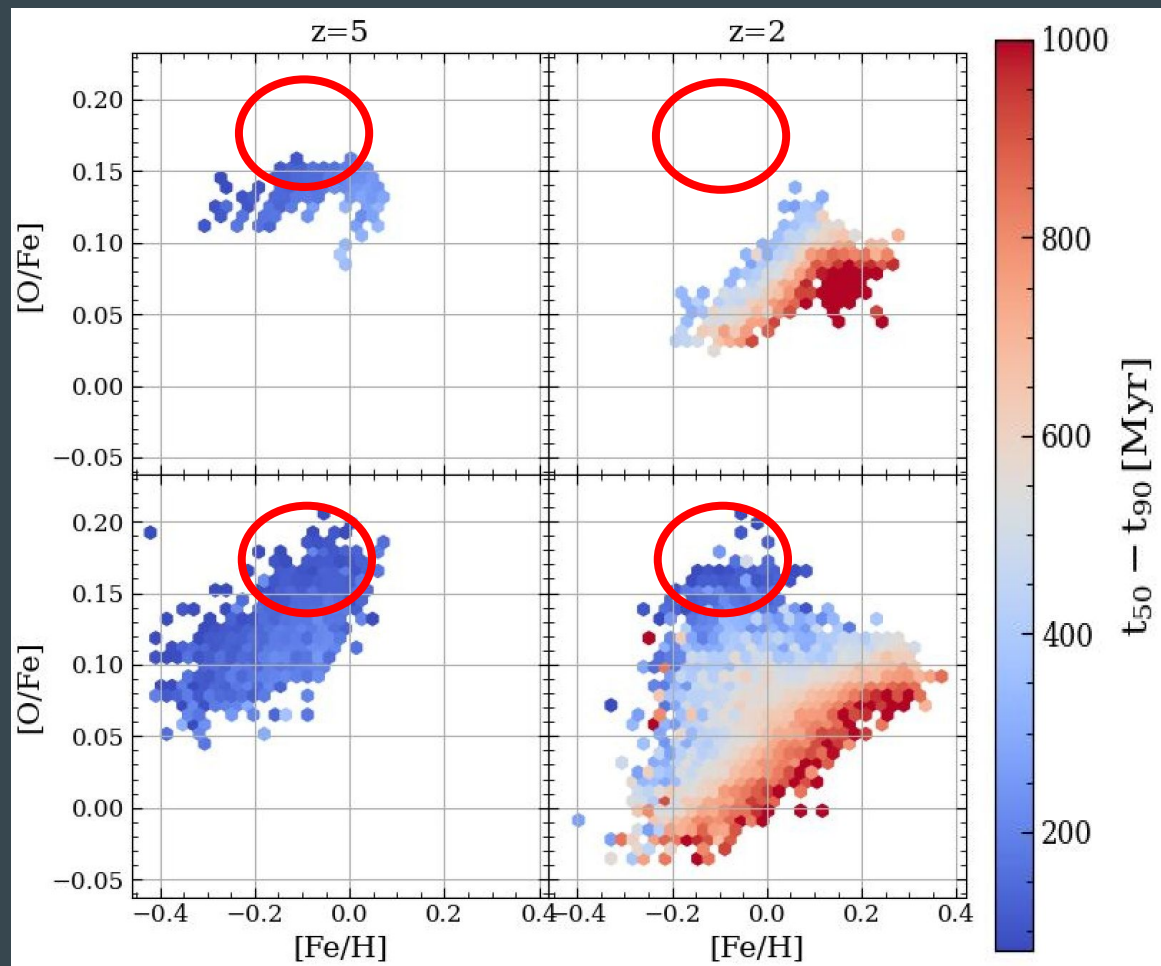
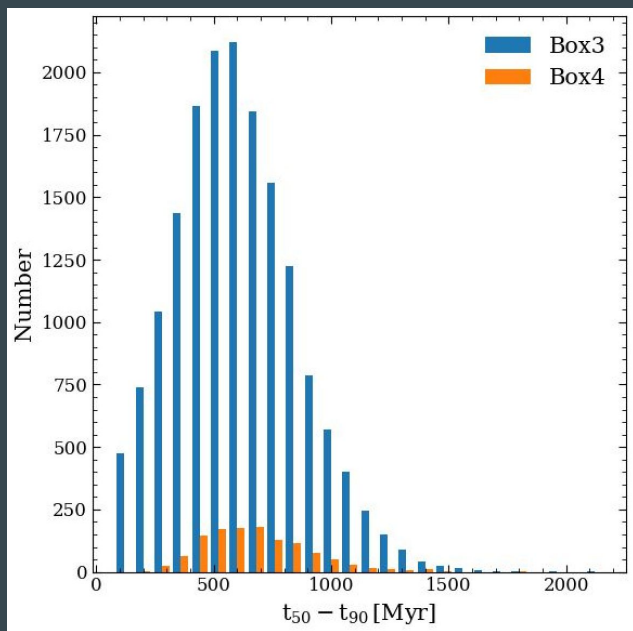
Magneticum



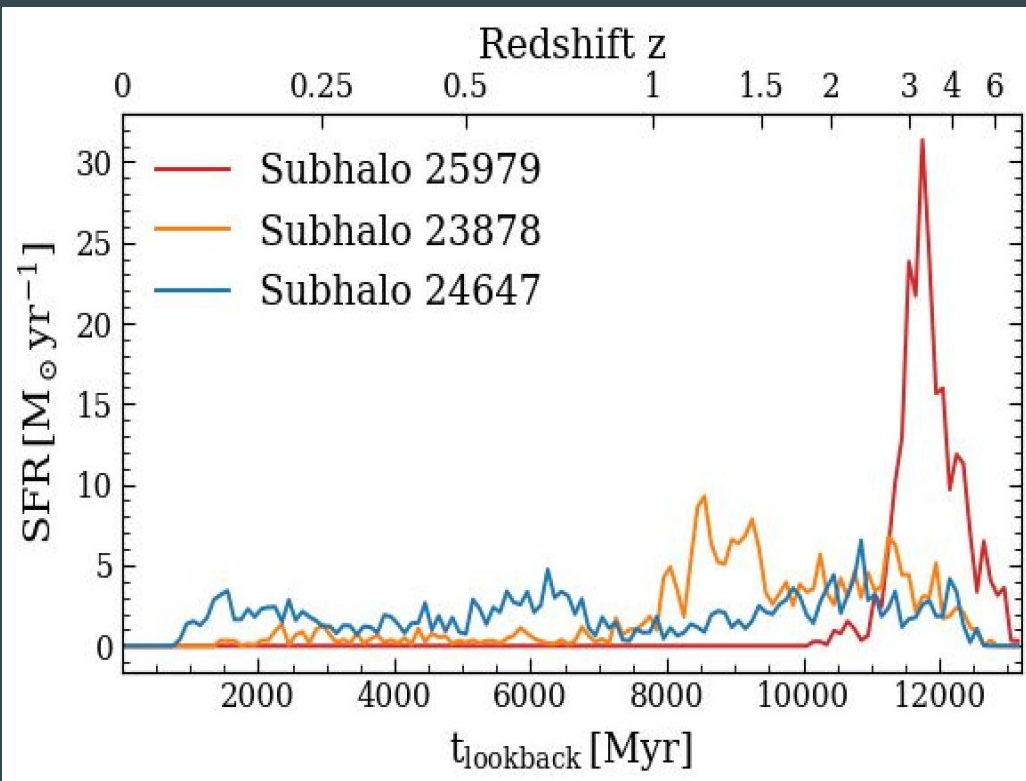
# Comparing Boxes



# Comparing Boxes



# Three Ellipses at $z=0$

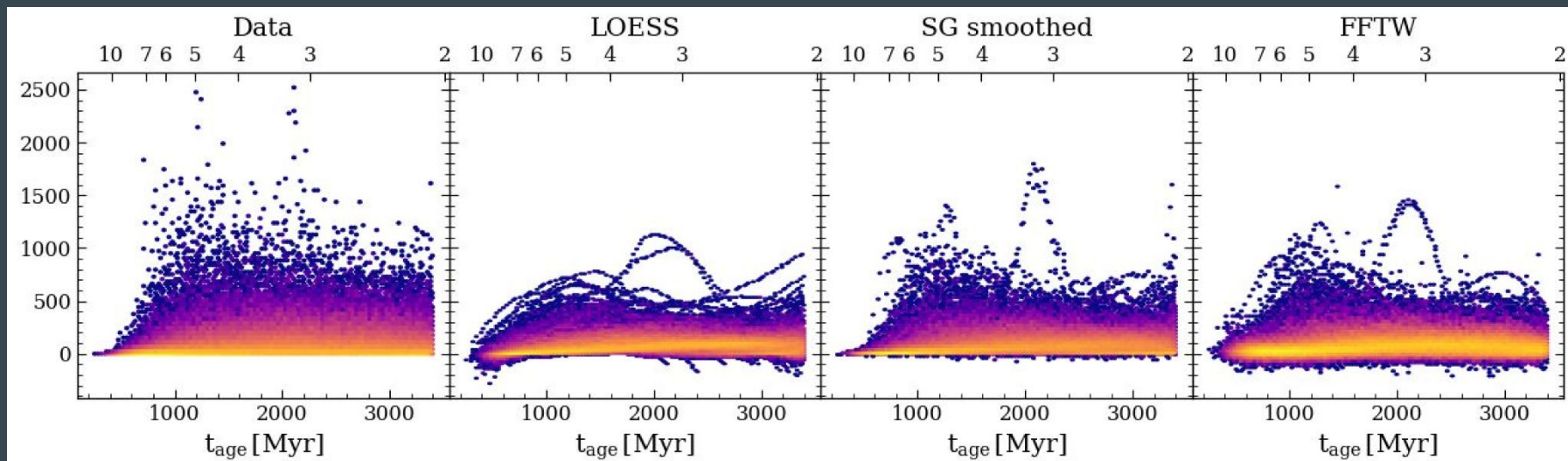


## Summary:

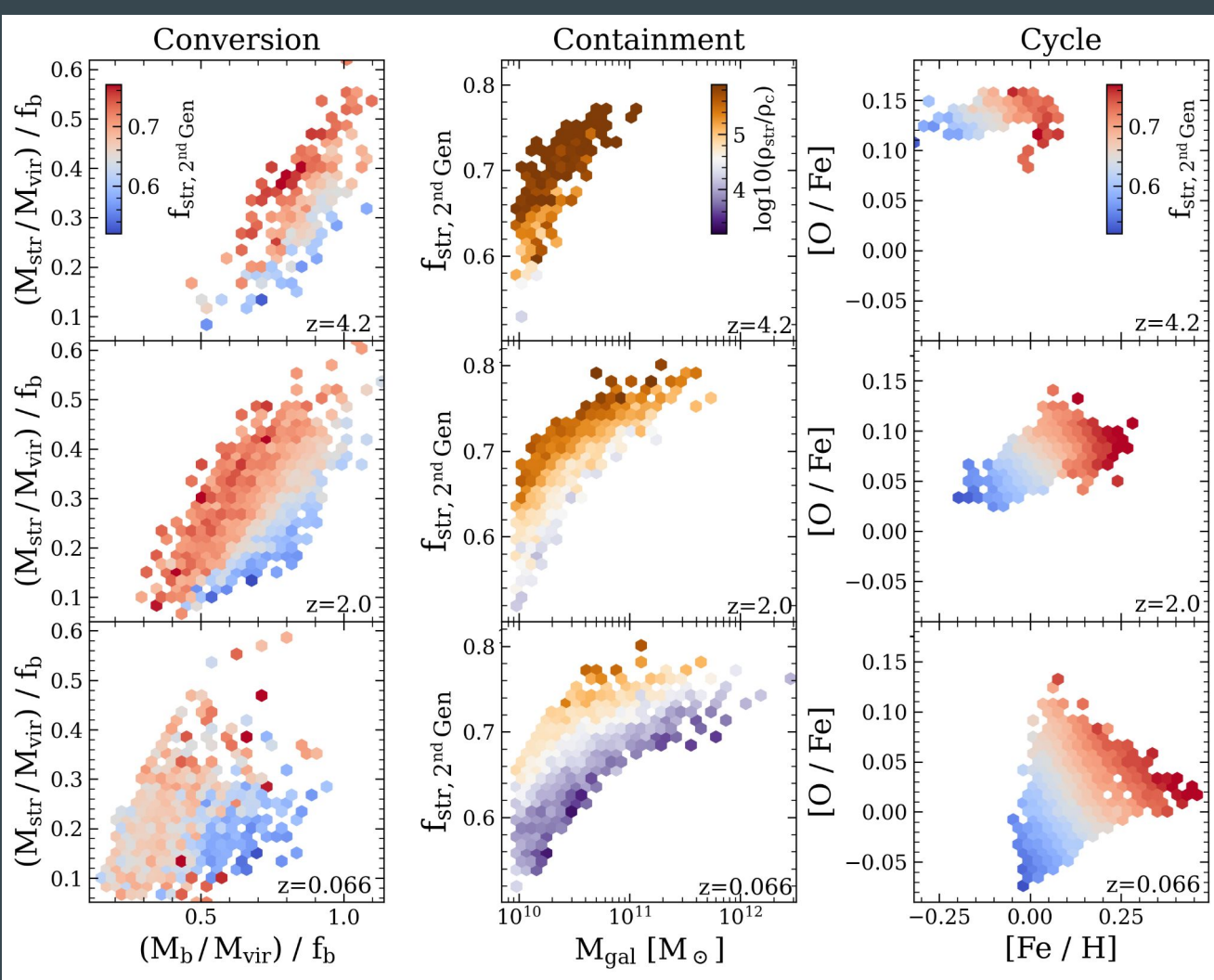
- Metals → Evolutionary History
  - Where general properties fail
- **Earlier** Formation → **Enhanced**  $\alpha$ , **Shorter** Burst (higher SFR)
  - But not necessarily more compact!
- More **extended** SF history → **Lower**  $\alpha$ , **Enhanced** Fe/H
- But still need a greater **spread** in values

Next step: quantify SFH shape

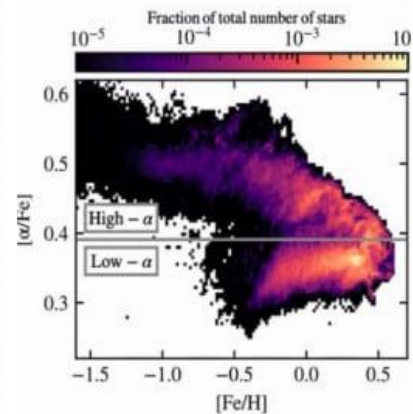
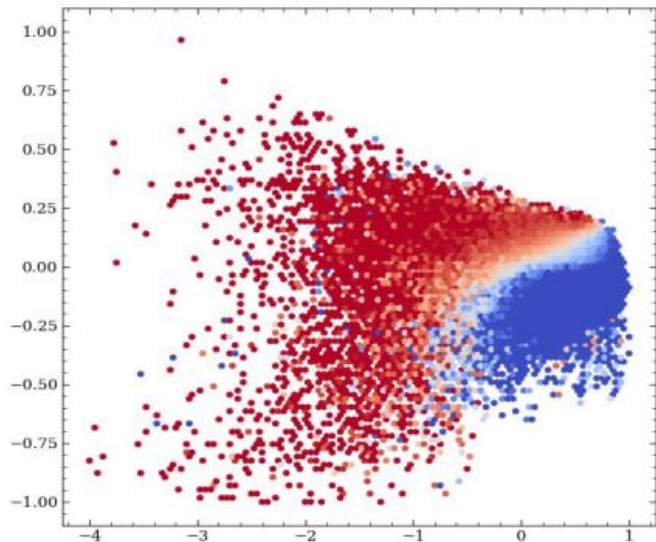
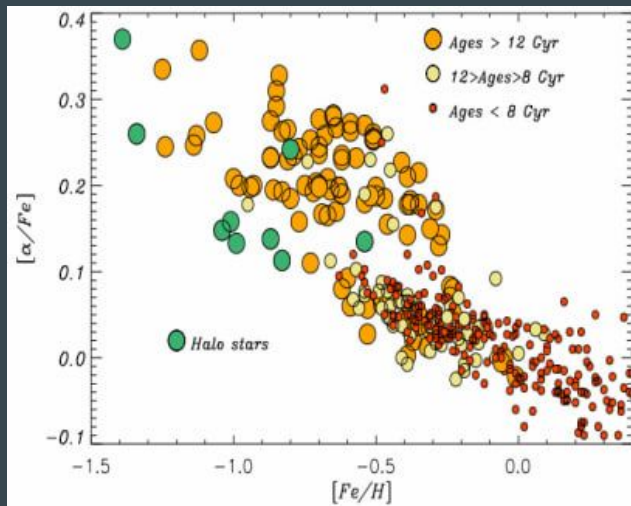
# SFH



# Outlook



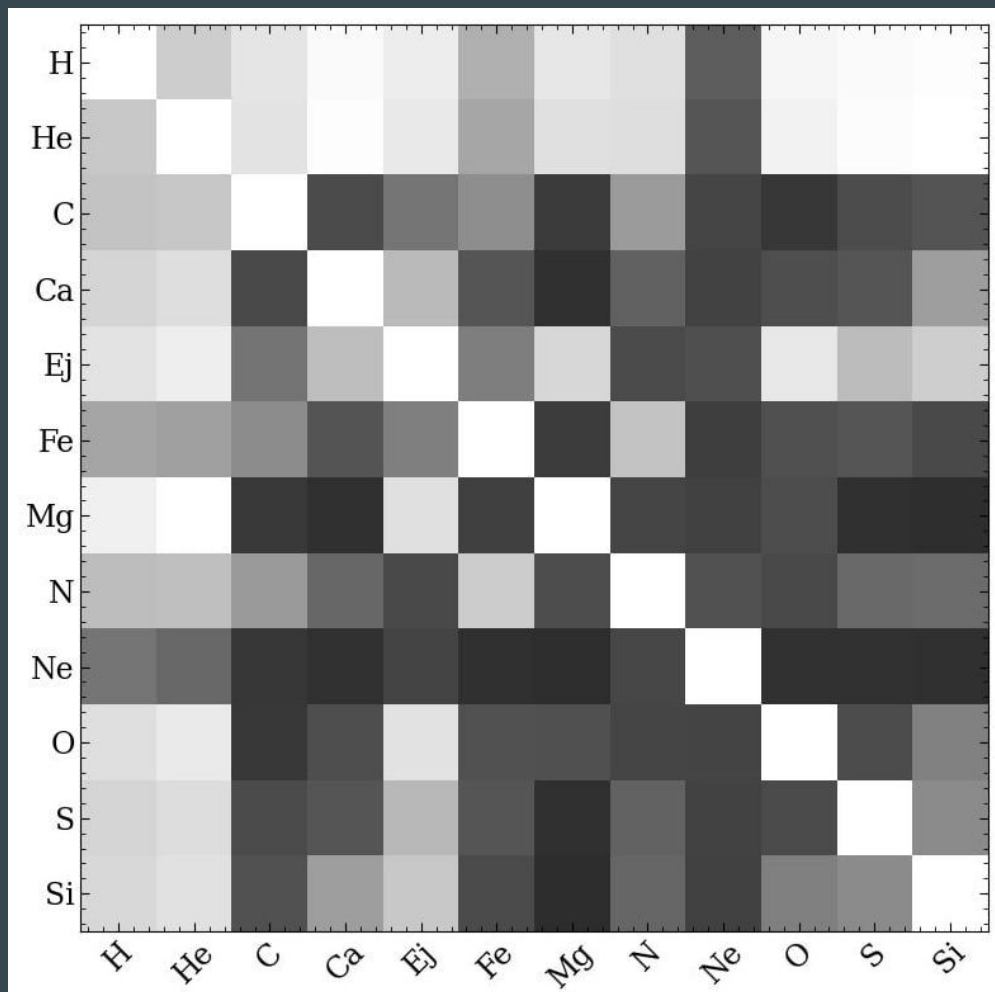
# Comparison to MW



VINTERGATAN



# Correlations



# Enrichment:

SN Ia: Decrease  $\alpha$

SN II:  
Low-Z: Decrease  
High-Z: Either/Or

SN II: Increase  $\alpha$

