



**ARCETRI**  
**ASTROBIOLOGY**  
**LABORATORY**

# Arcetri Astrobiology Laboratory

INAF - Astrophysical Observatory of Arcetri

**IAI-ASTROBIO**Lab

*Istituto Astrobiologico Italiano  
Rete dei laboratori nazionali di Astrobiologia*





Agenzia Spaziale Italiana



esa

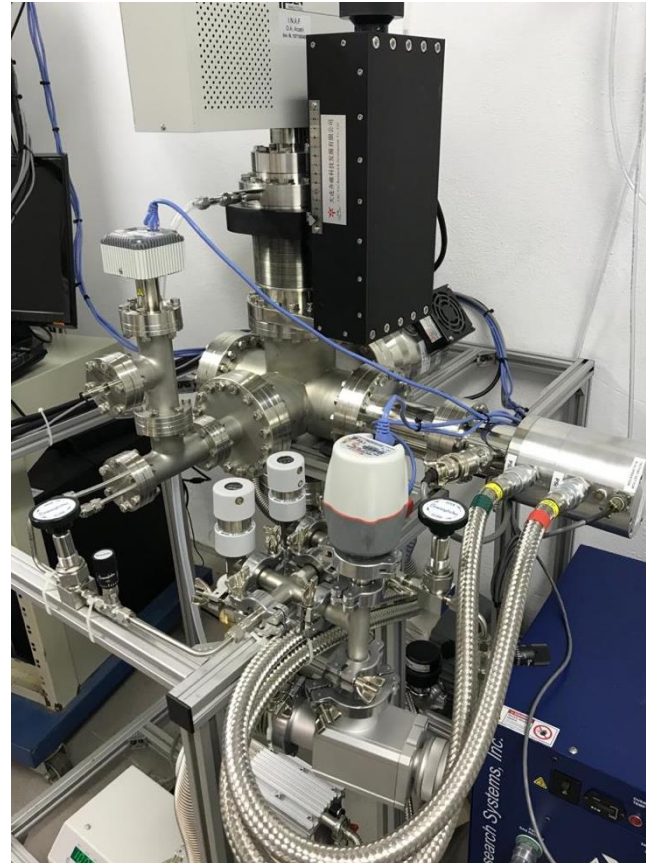
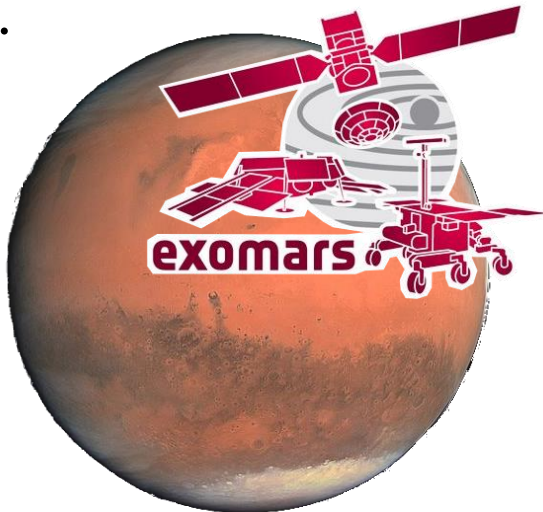


ARCTRI  
ASTROBIOLOGY  
LABORATORY

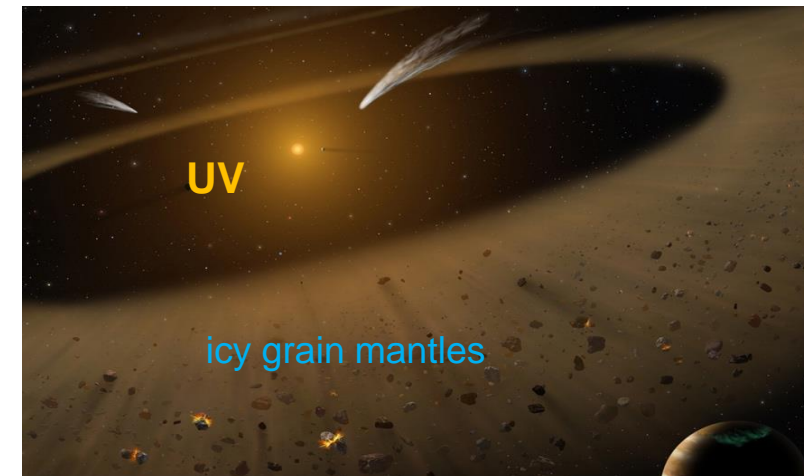
# Mars

# Protoplanetary Disks

Laboratory support to the scientific investigations and technology development of the Mars Organics Molecule Analyser (MOMA) and MicrOmega instruments on board ESA ExoMars 2022 space mission and to scientific interpretation of data acquired by SHERLOC instrument on board of NASA Perseverance rover.



Laboratory study on photostability of molecules in simulated astrophysical conditions simulating processes that may occur in the protoplanetary disks and planetary formation.



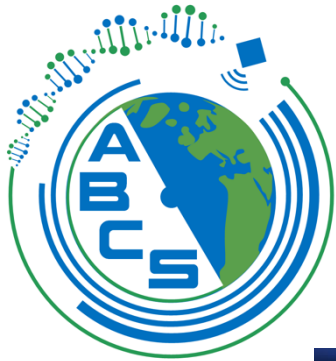
# AstroBio-CubeSat mission

IAI-ASTROBIOLab

Istituto Astrobiologico Italiano  
Rete dei laboratori nazionali di Astrobiologia

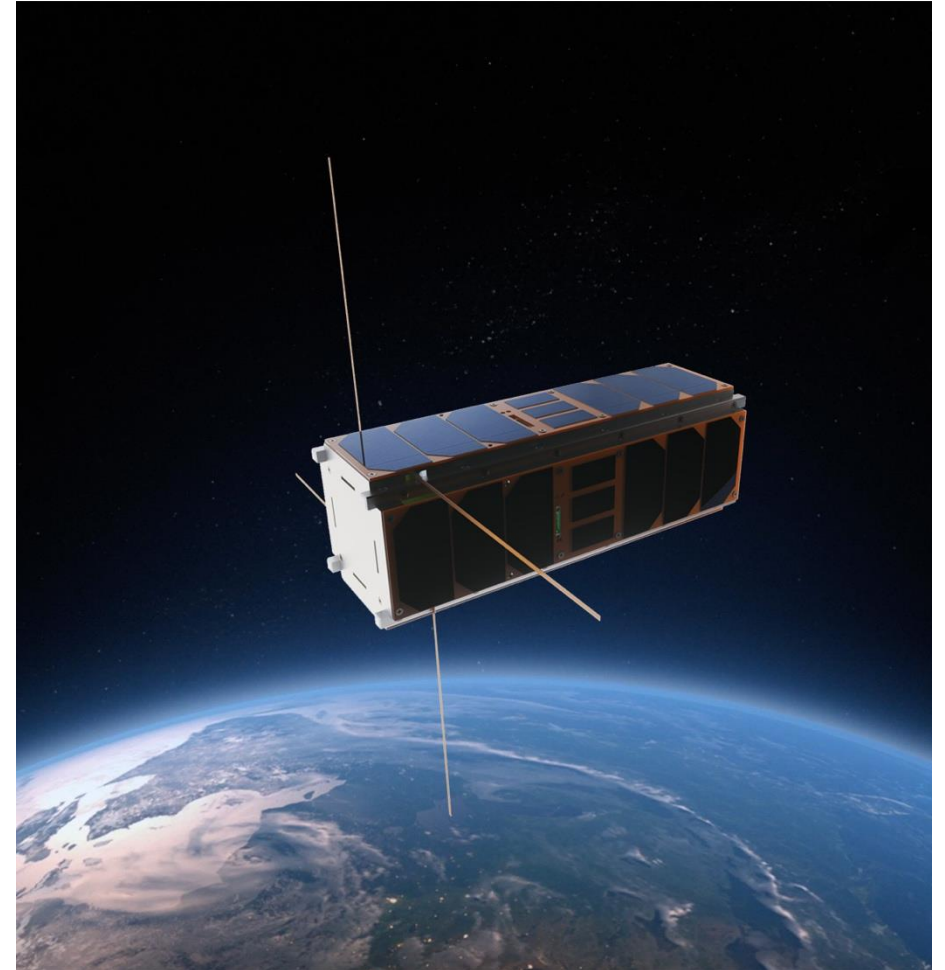
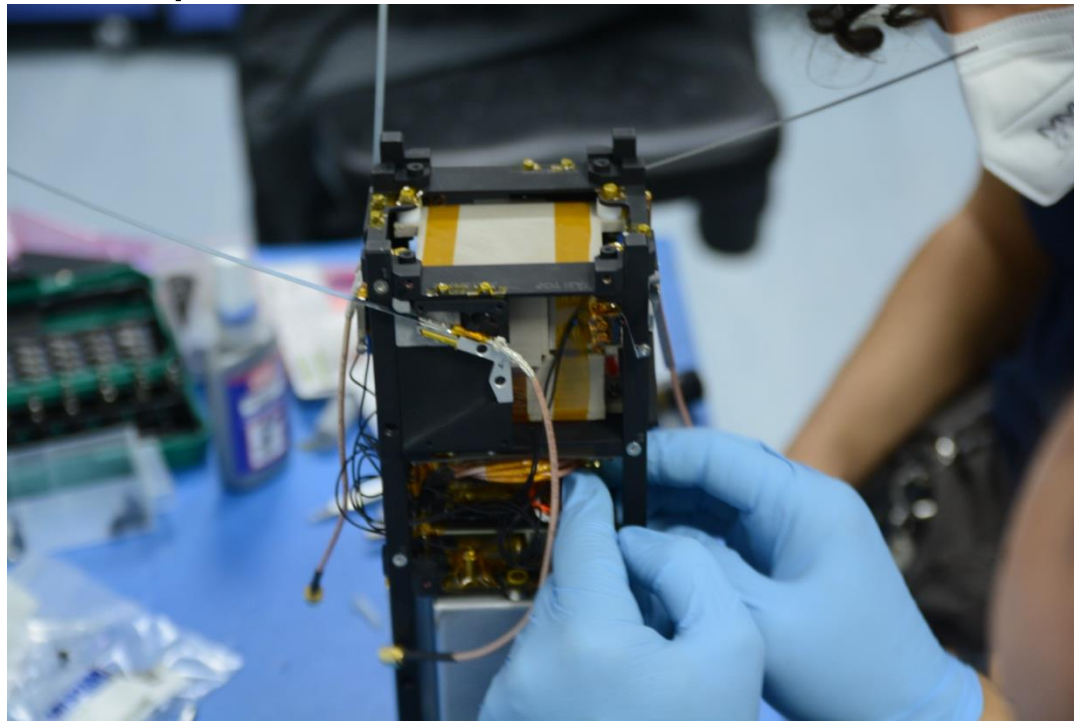


**ARCETRI**  
**ASTROBIOLOGY**  
**LABORATORY**



Development of AstroBio CubeSat for testing biotechnology for deep space astrobiology missions.

Selected by ESA for Vega-C launch in July 2022.



# The Laboratory Team



## Research Staff



J.R. Brucato



T. Fornaro

## PhD Students



O. Mc Intosh



V. Lino

## Collaborator



A. Meneghin

## PostDocs



G. Poggiali



M. Corazzi



C. Garcia

## MA student



A. Alberini



S. Pagnoscin



C. Lorenz