

ICT 2015

Server Ridondati

(virtaulizzare tra ostacoli e carenze)

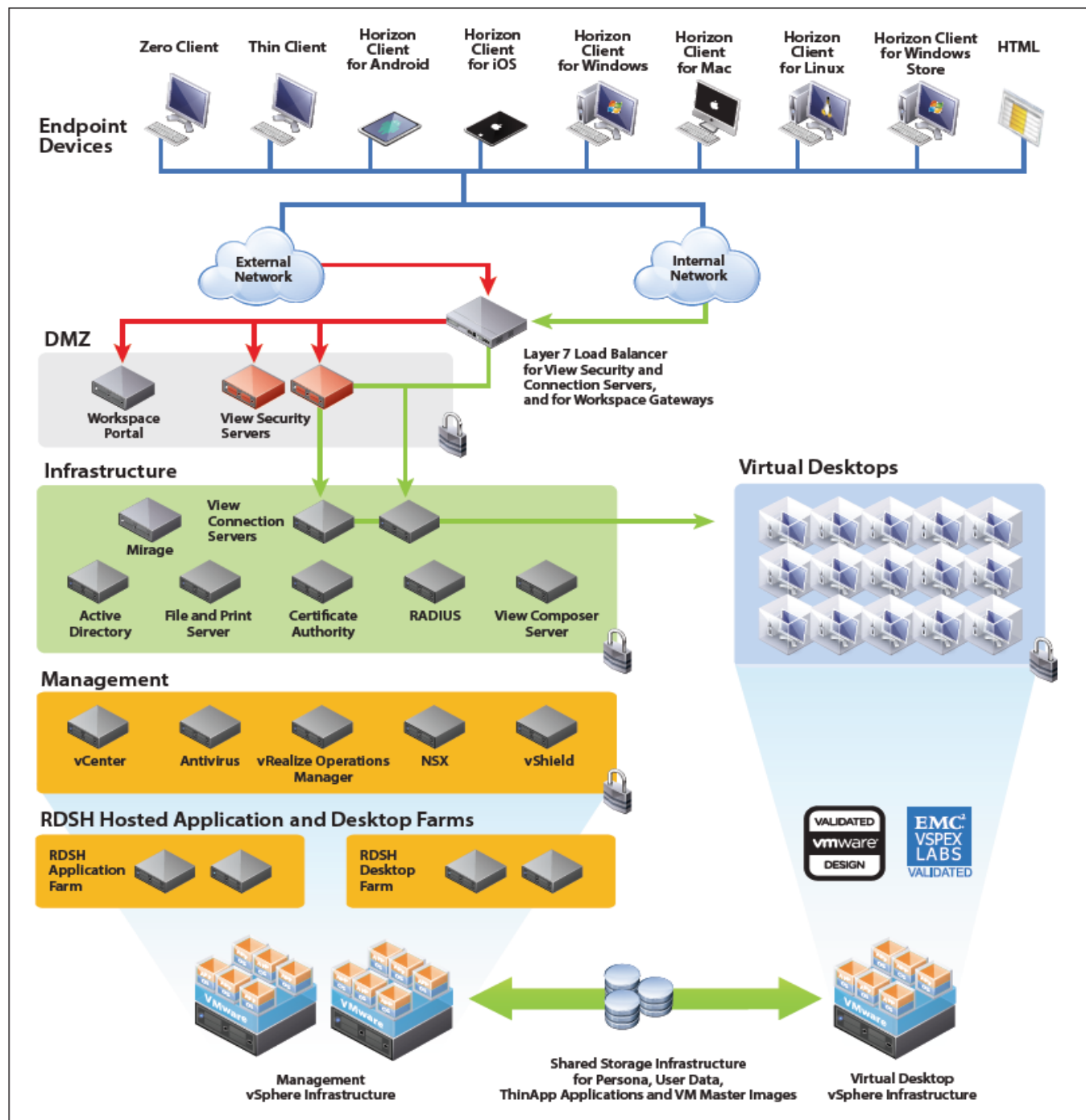
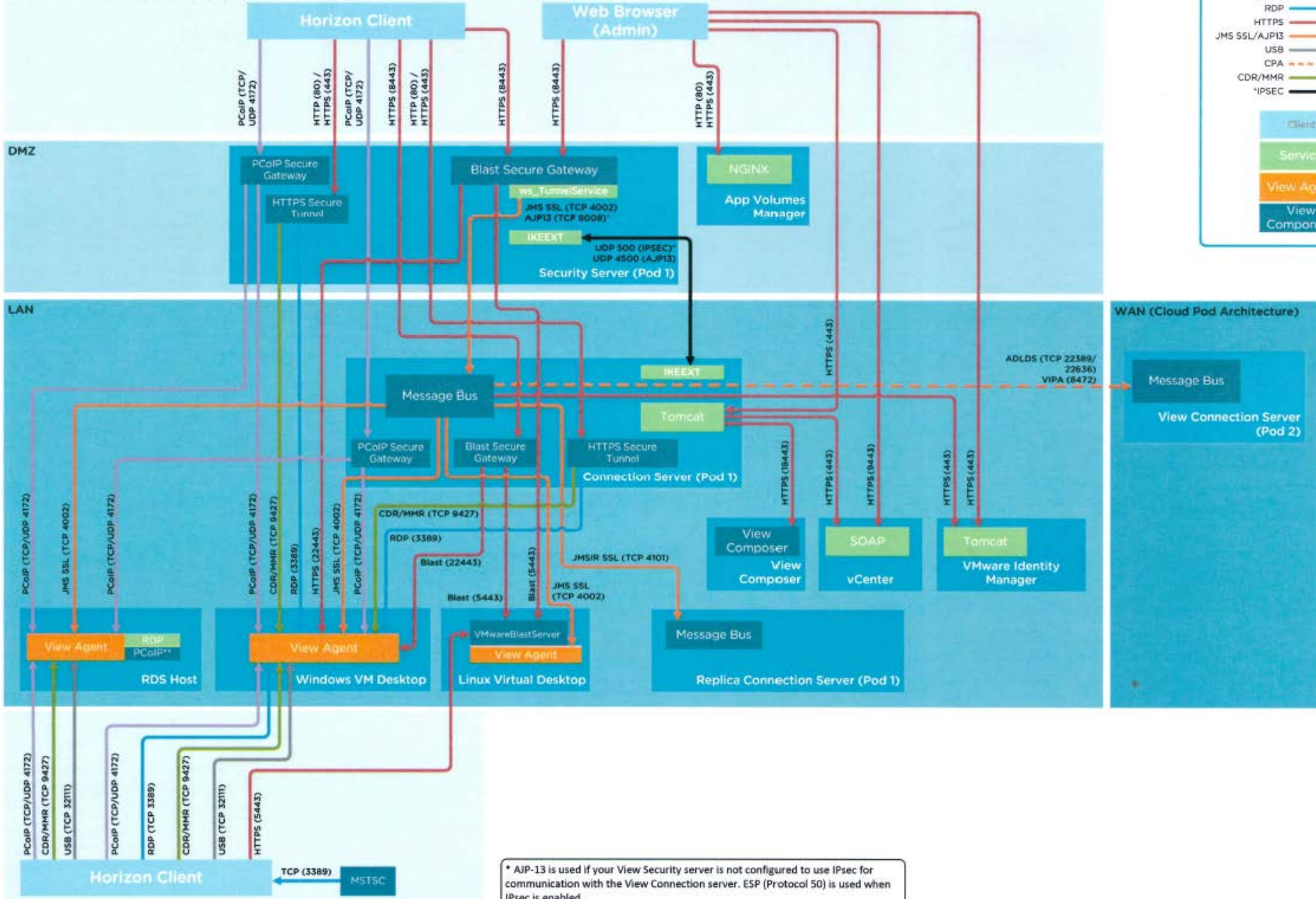


Figure 1: Horizon 6 Architecture

Client Network (Tunnelled Connections)



Client Network (Direct Connections)

* AJP-13 is used if your View Security server is not configured to use IPsec for communication with the View Connection server. ESP (Protocol 50) is used when IPsec is enabled.
 ** TCP/UDP 4173 (and incrementally higher) is used internally on RDSH.

Virtual SAN

Virtual SAN is a hypervisor-converged, software-defined storage platform that is fully integrated with vSphere. Virtual SAN aggregates locally attached disks of hosts that are members of a vSphere cluster to create a distributed, shared storage solution. Because Virtual SAN sits directly in the I/O data path, it can deliver high levels of performance, scalability, and resilience without taxing the CPU with additional overhead. Virtual SAN enables the rapid provisioning of storage within VMware vCenter during virtual machine creation and deployment operations.

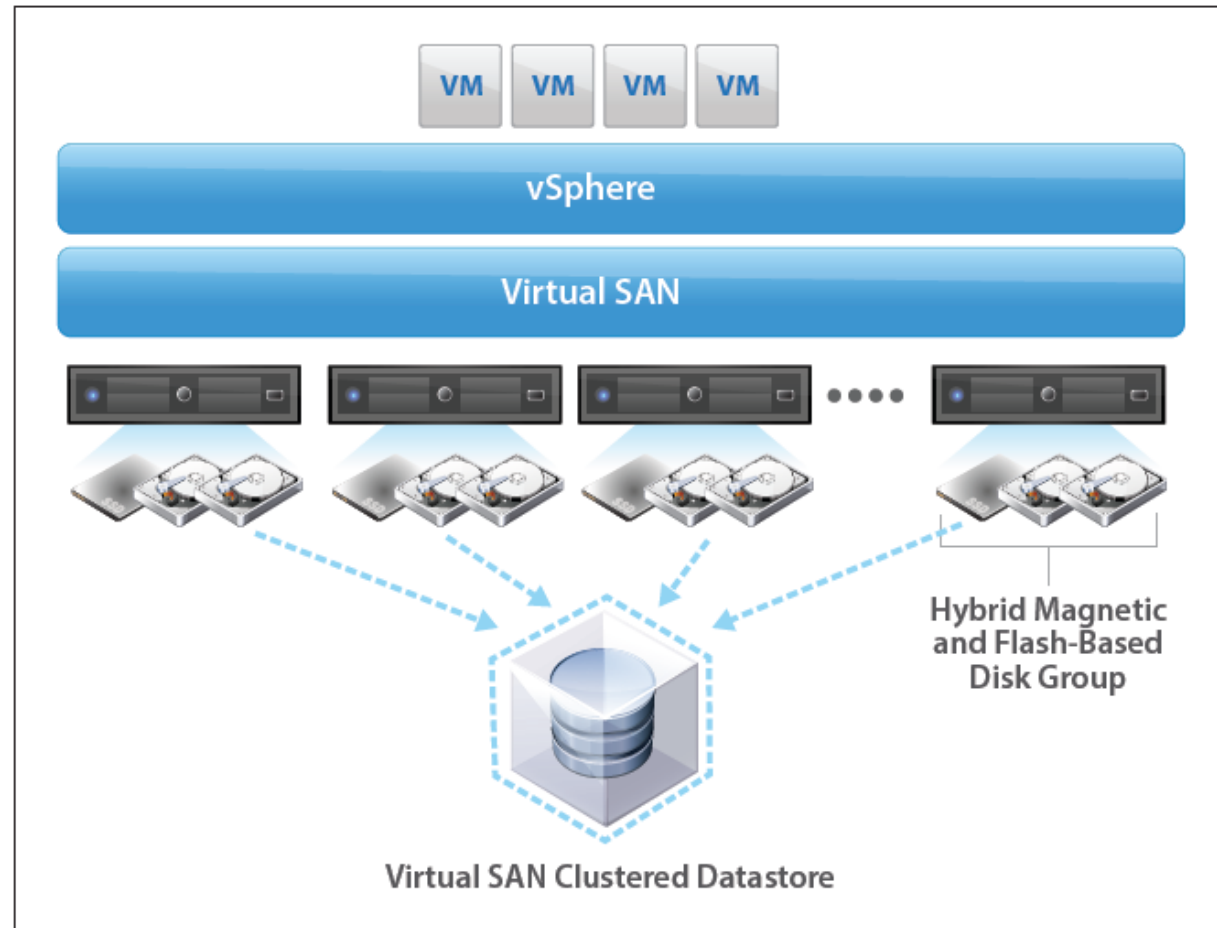


Figure 15: Virtual SAN Hybrid Disk Architecture

- History
- Home
- vCenter
- Rules and Profiles
- vCenter Orchestrator
- Administration
- Tasks
- Log Browser
- Events
- Tags
- New Search
- Saved Searches

Home

Inventories

- vCenter
- Hosts and Clusters
- VMs and Templates
- Storage
- Networking
- vCloud Hybrid Service Installer
- vCenter Orchestrator

Monitoring

- Task Console
- Event Console
- Host Profiles
- VM Storage Policies
- Customization Specification Manager
- vCenter Operations Manager

Administration

- Roles
- Licensing
- vCenter Solutions Manager

[Watch How-to Videos](#)

Recent Tasks

All Running Failed

My Tasks [More Tasks](#)

Work In Progress

Alarms

All (0) New (0) Ackno...

VCENTER

- OABO_INAF
 - esx01
 - esx02

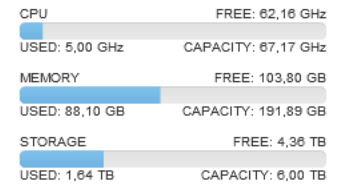
VCENTER Actions

Summary Monitor Manage Related Objects



VCENTER

Virtual Machines: 52
Hosts: 2



Tags

Assigned Tag	Category	Description
This list is empty.		

Assign... Remove...

Version Information

Version	5.5.0
Build	1945274

Update Manager Compliance

Status ✘ Non-Compliant

[Scan ...](#) [Detailed Status](#)

Licensing

Usage	1 instance
Product	vCenter Server 5 Essentials
Expiration date	Never
Remaining time	Unlimited

[Assign License Key...](#)

Recent Tasks

All Running Failed

My Tasks More Tasks

Work In Progress

Alarms

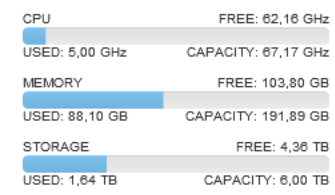
All (0) New (0) Ackno...

- VCENTER
 - OABO_INAF
 - esx01
 - AOBO-view
 - Golden-ESX01
 - View
 - VM Replica ESX02
 - davide_replica
 - dbima_replica
 - monitornet_replica
 - srweeam_2_ESX2
 - vcenter_replica_ESX
 - www_replica
 - assistenza
 - dcview01
 - FileServer_AMMOSS
 - nat1
 - paperina
 - srweeam
 - vwComposer
 - vwConnection01
 - vwSecurity01
 - W8-32-ThinApp
 - esx02
 - Golden-ESX02
 - VM Replica ESX01
 - assistenza_replica
 - dcview01_replica
 - Gold8x86_replica
 - Paperina_06_02_15
 - paperina_replica
 - srweeam_ESX1
 - vcenter_replica_ESX
 - vwComposer_replica
 - davide
 - dbima
 - indextest
 - monitornet
 - nat2
 - srweeam_2
 - vcenter_replica
 - vwConnection02
 - vwSecurity02
 - www



VCENTER

Virtual Machines: 52
Hosts: 2



Tags

Assigned Tag	Category	Description
This list is empty.		

Assign... Remove...

Version Information

Version	5.5.0
Build	1945274

Update Manager Compliance

Status ✘ Non-Compliant

[Scan ...](#) [Detailed Status](#)

Licensing

Usage	1 instance
Product	vCenter Server 5 Essentials
Expiration date	Never
Remaining time	Unlimited

[Assign License Key...](#)

Recent Tasks

All Running Failed

Task Name	Status

My Tasks [More Tasks](#)

Work In Progress

Task Name	Status

Alarms

All (0) New (0) Ackno...

Alarm Name	Status

- Home
- VCENTER
 - OABO_INAF
 - Discovered virtual machine
 - Golden Images
 - Infrastructure
 - Nat
 - nat1
 - nat2
 - View Composer
 - View Managers
 - View Security
 - dcview01_replica
 - srweeam
 - srweeam_2
 - srweeam_2_ESX2
 - srweeam_ESX1
 - vcenter_replica**
 - vcenter_replica_ESX1
 - vcenter_replica_ESX2
 - OABO server
 - davide
 - davide_replica
 - dbima
 - dbima_replica
 - monitornet
 - monitornet_replica
 - www
 - Template
 - View Pools
 - VMwareViewComposerRej
 - assistenza
 - assistenza_replica
 - indextest
 - paperina
 - Paperina_06_02_15
 - paperina_replica
 - www_replica

Getting Started Summary Monitor Manage Related Objects

vcenter_replica

Powered On

Download Plug-in

Guest OS: Microsoft Windows Server 2012 (64-bit)
 Compatibility: ESXi 5.1 and later (VM version 9)
 VMware Tools: Running, version:9356 (Current)
 DNS Name: vcenter.oabo.local
 IP Addresses: 10.255.255.100
 Host: esx02

CPU USAGE: 419,00 MHz
 MEMORY USAGE: 1,60 GB
 STORAGE USAGE: 124,24 GB

VM Hardware

- CPU: 4 CPU(s), 419 MHz used
- Memory: 10240 MB, 1638 MB used
- Hard disk 1: 60,00 GB
- Hard disk 2: 120,00 GB
- Network adapter 2: Management (connected)
- CD/DVD drive 1: Disconnected
- Video card: 4,00 MB
- Other: Additional Hardware
- Compatibility: ESXi 5.1 and later (VM version 9)

Edit Settings...

VM Storage Policies

- VM Storage Policies: --
- VM Storage Policy Compliance: --
- Last Checked Date: --

Refresh

Tags

Assigned Tag	Category	Description
This list is empty.		

Assign... Remove...

Advanced Configuration

- EVC Mode: N/A

Notes

Edit...

Related Objects

- Host: esx02
- Resource pool: esx02
- Networks: Management
- Storage: ESX02:RAID5

More related objects

vApp Details

- Product
- Version
- Vendor

Update Manager Compliance

- Status: --

Scan ... Detailed Status

Recent Tasks

All Running Failed

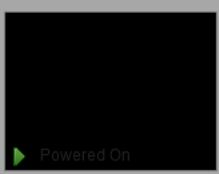
My Tasks More Tasks

Work In Progress

Alarms

All (0) New (0) Ackno...

- Home
- VCENTER
 - OABO_INAF
 - Discovered virtual machine
 - Golden Images
 - Infrastructure
 - Nat
 - nat1
 - nat2
 - View Composer
 - View Managers
 - View Security
 - dcview01_replica
 - srweeam
 - srweeam_2
 - srweeam_2_ESX2
 - srweeam_ESX1
 - vcenter_replica**
 - vcenter_replica_ESX1
 - vcenter_replica_ESX2
 - OABO server
 - davide
 - davide_replica
 - dbima
 - dbima_replica
 - monitornet
 - monitornet_replica
 - www
 - Template
 - View Pools
 - VMwareViewComposerRep
 - assistenza
 - assistenza_replica
 - indextest
 - paperina
 - Paperina_06_02_15
 - paperina_replica
 - www_replica



vcenter_replica

Guest OS: Microsoft Windows Server 2012 (64-bit)
 Compatibility: ESXi 5.1 and later (VM version 9)
 VMware Tools: Running, version:9356 (Current)
 DNS Name: vcenter.oabo.local
 IP Addresses: 10.255.255.100
 Host: esx02

CPU USAGE
398,00 MHz

MEMORY USAGE
2,40 GB

STORAGE USAGE
124,24 GB

Launch Console

VM Hardware

- CPU: 4 CPU(s), 398 MHz used
- Memory: 10240 MB, 2457 MB used
- Hard disk 1: 60,00 GB
- Hard disk 2: 120,00 GB
- Network adapter 2: Management (connected)
- CD/DVD drive 1: Disconnected
- Video card: 4,00 MB
- Other: Additional Hardware
- Compatibility: ESXi 5.1 and later (VM version 9)

Edit Settings...

VM Storage Policies

- VM Storage Policies: --
- VM Storage Policy Compliance: --
- Last Checked Date: --

Refresh

Tags

Assigned Tag	Category	Description
This list is empty.		

Assign... Remove...

Advanced Configuration

- EVC Mode: N/A

Notes

Edit...

vApp Details

- Product
- Version
- Vendor

Related Objects

- Host: esx02
- Resource pool: esx02
- Networks: Management
- Storage: ESX02:RAID5

More related objects

Update Manager Compliance

- Status: --

Scan ... Detailed Status

vcenter_replica - Edit Settings

Virtual Hardware VM Options SDRS Rules vApp Options

- CPU: 4
- Memory: 10240 MB
- Hard disk 1: 60 GB
- Hard disk 2: 120 GB
- SCSI controller 0: LSI Logic SAS
- Network adapter 2: Management Connected
- CD/DVD drive 1: Client Device Connected
- Video card: Specify custom settings
- VMCI device
- Other Devices
- Upgrade: Schedule VM Compatibility Upgrade...

New device: Add

Compatibility: ESXi 5.1 and later (VM version 9) OK Cancel

Recent Tasks

All Running Failed

My Tasks More Tasks

Work In Progress

- vcenter_replica - Edit ...

Alarms

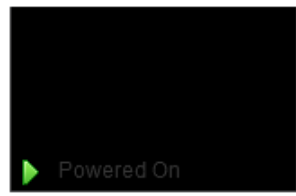
All (0) New (0) Ackno...

Home

- VCENTER
 - OABO_INAF
 - Discovered virtual machi
 - Golden Images
 - Infrastructure
 - Nat
 - nat1
 - nat2
 - View Composer
 - View Managers
 - View Security
 - dcview01_replica
 - srveeam**
 - srveeam_2
 - srveeam_2_ESX2
 - srveeam_ESX1
 - vcenter_replica
 - vcenter_replica_ESX1
 - vcenter_replica_ESX2
 - OABO server
 - davide
 - davide_replica
 - dbima
 - dbima_replica
 - monitornet
 - monitornet_replica
 - www
 - Template
 - View Pools
 - VMwareViewComposerR
 - assistenza
 - assistenza_replica
 - indextest
 - panerina

srveeam Actions

Getting Started **Summary** Monitor Manage Related Objects



Guest OS: Microsoft Windows Server 2012 (64-bit) 20,00 MHz

Compatibility: ESXi 5.5 and later (VM version 10) MEMORY USAGE

VMware Tools: Running, version:9356 (Current) 0 MB

DNS Name: SRVVEEAM.oabo.local GE USAGE

IP Addresses: 10.255.255.98 GB

View all 2 IP addresses

Host: esx01

srveeam

IP Addresses:

- 10.255.255.98
- 137.204.66.66

VM Hardware

- CPU: 2 CPU(s), 20 MHz used
- Memory: 4096 MB, 245 MB used
- Hard disk 1: 80,00 GB
- Network adapter 1: DIPARTIMENTO (connected)
- Network adapter 3: Management (connected)
- CD/DVD drive 1: Disconnected
- Floppy drive 1: Disconnected
- Video card: 4,00 MB
- Other: Additional Hardware
- Compatibility: ESXi 5.5 and later (VM version 10)

Edit Settings...

VM Storage Policies

- VM Storage Policies: --
- VM Storage Policy Compliance: --
- Last Checked Date: --

Refresh

Tags

Assigned Tag	Category	Description
This list is empty.		

Assign... Remove...

Advanced Configuration

- EVC Mode: N/A

Notes

Related Objects

Host	esx01
Resource pool	esx01
Networks	DIPARTIMENTO Management
Storage	ESX01:RAID5

Recent Tasks

All Running Failed

My Tasks More Tasks

Work In Progress

Alarms

All (0) New (0) Ackno...

Home View

Backup Job Replication Job Backup Copy VM Copy File Copy Restore Import Backup

Primary Jobs Auxiliary Jobs Restore

Backup & Replication

Type in an object name to search for

- Jobs
 - Backup
 - Replication
 - Backups
 - Disk
 - Imported
 - Replicas
 - Ready
 - Last 24 hours
 - Success
 - Warning

Name	Type	Status	Last result	Next run	Target	Objects in job
Ammass server	VMware Replica	Stopped	Success	02/10/2015 19:00:00	esx02	1
Domain server	VMware Replica	Stopped	Success	05/10/2015 07:10:00	esx02	1
paperina	VMware Backup	Stopped	Success	02/10/2015 22:00:00	Lenovo EZ Repository	1
Paperina replica	VMware Replica	Stopped	Success	03/10/2015 13:00:00	esx02	1
Rep Assistenza	VMware Replica	Stopped	Success	<Not scheduled>	esx02	1
Rep Gold8x86	VMware Replica	Stopped	Warning	<Not scheduled>	esx02	1
Rep srvveeam	VMware Replica	Stopped	Success	02/10/2015 23:00:00	esx02	1
Rep vwComposer	VMware Replica	Stopped	Success	02/10/2015 19:00:00	esx02	1
vcenter	VMware Replica	Stopped	Success	<Disabled>	esx02	1

- Backup & Replication
- Virtual Machines
- Files
- Backup Infrastructure
- SAN Infrastructure
- History

9 jobs Standard Edition Support contract expired VEEAM

Windows taskbar with icons for Start, File Explorer, Mail, and Veeam Backup & Replication. System tray shows network, volume, and clock (ITA 18:48, 02/10/2015).

Home

- VCENTER
 - OABO_INAF
 - Discovered virtual machi
 - Golden Images
 - Infrastructure
 - Nat
 - nat1
 - nat2
 - View Composer
 - View Managers
 - View Security
 - dcview01_replica
 - srweeam
 - srweeam_2
 - srweeam_2_ESX2
 - srweeam_ESX1
 - vcenter_replica
 - vcenter_replica_ESX1
 - vcenter_replica_ESX2
 - OABO server
 - davide
 - davide_replica
 - dbima
 - dbima_replica
 - monitornet
 - monitornet_replica
 - www
 - Template
 - View Pools
 - VMwareViewComposerR
 - assistenza
 - assistenza_replica
 - indextest
 - panerina

nat1 Actions

Getting Started Summary Monitor Manage Related Objects

```

VMware Tools:
 1: vmtoolsd (10.0.0.0)
 2: vmtoolsd (10.0.0.0)
 3: vmtoolsd (10.0.0.0)
 4: vmtoolsd (10.0.0.0)
 5: vmtoolsd (10.0.0.0)
 6: vmtoolsd (10.0.0.0)
 7: vmtoolsd (10.0.0.0)
 8: vmtoolsd (10.0.0.0)
 9: vmtoolsd (10.0.0.0)
10: vmtoolsd (10.0.0.0)
11: vmtoolsd (10.0.0.0)
12: vmtoolsd (10.0.0.0)
13: vmtoolsd (10.0.0.0)
14: vmtoolsd (10.0.0.0)
15: vmtoolsd (10.0.0.0)
16: vmtoolsd (10.0.0.0)
17: vmtoolsd (10.0.0.0)
18: vmtoolsd (10.0.0.0)
19: vmtoolsd (10.0.0.0)
20: vmtoolsd (10.0.0.0)
21: vmtoolsd (10.0.0.0)
22: vmtoolsd (10.0.0.0)
23: vmtoolsd (10.0.0.0)
24: vmtoolsd (10.0.0.0)
25: vmtoolsd (10.0.0.0)
26: vmtoolsd (10.0.0.0)
27: vmtoolsd (10.0.0.0)
28: vmtoolsd (10.0.0.0)
29: vmtoolsd (10.0.0.0)
30: vmtoolsd (10.0.0.0)
31: vmtoolsd (10.0.0.0)
32: vmtoolsd (10.0.0.0)
33: vmtoolsd (10.0.0.0)
34: vmtoolsd (10.0.0.0)
35: vmtoolsd (10.0.0.0)
36: vmtoolsd (10.0.0.0)
37: vmtoolsd (10.0.0.0)
38: vmtoolsd (10.0.0.0)
39: vmtoolsd (10.0.0.0)
40: vmtoolsd (10.0.0.0)
41: vmtoolsd (10.0.0.0)
42: vmtoolsd (10.0.0.0)
43: vmtoolsd (10.0.0.0)
44: vmtoolsd (10.0.0.0)
45: vmtoolsd (10.0.0.0)
46: vmtoolsd (10.0.0.0)
47: vmtoolsd (10.0.0.0)
48: vmtoolsd (10.0.0.0)
49: vmtoolsd (10.0.0.0)
50: vmtoolsd (10.0.0.0)
51: vmtoolsd (10.0.0.0)
52: vmtoolsd (10.0.0.0)
53: vmtoolsd (10.0.0.0)
54: vmtoolsd (10.0.0.0)
55: vmtoolsd (10.0.0.0)
56: vmtoolsd (10.0.0.0)
57: vmtoolsd (10.0.0.0)
58: vmtoolsd (10.0.0.0)
59: vmtoolsd (10.0.0.0)
60: vmtoolsd (10.0.0.0)
61: vmtoolsd (10.0.0.0)
62: vmtoolsd (10.0.0.0)
63: vmtoolsd (10.0.0.0)
64: vmtoolsd (10.0.0.0)
65: vmtoolsd (10.0.0.0)
66: vmtoolsd (10.0.0.0)
67: vmtoolsd (10.0.0.0)
68: vmtoolsd (10.0.0.0)
69: vmtoolsd (10.0.0.0)
70: vmtoolsd (10.0.0.0)
71: vmtoolsd (10.0.0.0)
72: vmtoolsd (10.0.0.0)
73: vmtoolsd (10.0.0.0)
74: vmtoolsd (10.0.0.0)
75: vmtoolsd (10.0.0.0)
76: vmtoolsd (10.0.0.0)
77: vmtoolsd (10.0.0.0)
78: vmtoolsd (10.0.0.0)
79: vmtoolsd (10.0.0.0)
80: vmtoolsd (10.0.0.0)
81: vmtoolsd (10.0.0.0)
82: vmtoolsd (10.0.0.0)
83: vmtoolsd (10.0.0.0)
84: vmtoolsd (10.0.0.0)
85: vmtoolsd (10.0.0.0)
86: vmtoolsd (10.0.0.0)
87: vmtoolsd (10.0.0.0)
88: vmtoolsd (10.0.0.0)
89: vmtoolsd (10.0.0.0)
90: vmtoolsd (10.0.0.0)
91: vmtoolsd (10.0.0.0)
92: vmtoolsd (10.0.0.0)
93: vmtoolsd (10.0.0.0)
94: vmtoolsd (10.0.0.0)
95: vmtoolsd (10.0.0.0)
96: vmtoolsd (10.0.0.0)
97: vmtoolsd (10.0.0.0)
98: vmtoolsd (10.0.0.0)
99: vmtoolsd (10.0.0.0)
100: vmtoolsd (10.0.0.0)
    
```

nat1

Guest OS: Other 2.6.x Linux (64-bit)

Compatibility: ESXi 5.0 and later (VM version 8)

VMware Tools: Running, version:2147483647 (3rd-party/Independent)

DNS Name: nat1.bo.astro.it

IP Addresses: 137.204.66.231
[View all 16 IP addresses](#)

Host: esx01

CPU USAGE
62,00 MHz

MEMORY USAGE
61,00 MB

STORAGE USAGE
4,06 GB

[Launch Console](#)

VM Hardware

- CPU: 1 CPU(s), 62 MHz used
- Memory: 1024 MB, 61 MB used
- Hard disk 1: 10,00 GB
- Network adapter 1: DIPARTIMENTO (connected)
- Network adapter 2: Management (connected)
- Network adapter 3: OABODMZ (connected)
- Network adapter 4: OABOVIEW (connected)
- Network adapter 5: FWSync (connected)
- Network adapter 6: internal (disconnected)
- CD/DVD drive 1: Disconnected
- Floppy drive 1: Disconnected
- Video card: 4,00 MB
- Other: Additional Hardware
- Compatibility: ESXi 5.0 and later (VM version 8)

[Edit Settings...](#)

VM Storage Policies

- VM Storage Policies: --
- VM Storage Policy Compliance: --
- Last Checked Date: --

[Refresh](#)

Tags

Assigned Tag	Category	Description
This list is empty.		

[Assign...](#) [Remove...](#)

Related Objects

- Host: esx01
- Resource pool: esx01
- Networks:
 - DIPARTIMENTO
 - FWSync
 - Management

Advanced Configuration

- EVC Mode: N/A

Recent Tasks

All Running Failed

My Tasks [More Tasks](#)

Work In Progress

Alarms

All (0) New (0) Ackno...

Status: Dashboard



System Information

Name	nat1.bo.astro.it
Version	2.2.4-RELEASE (amd64) built on Sat Jul 25 19:57:37 CDT 2015 FreeBSD 10.1-RELEASE-p15 You are on the latest version.
Platform	pfSense
CPU Type	Intel(R) Xeon(R) CPU E5-2450 0 @ 2.10GHz Current: 262 MHz, Max: 2100 MHz
Uptime	45 Days 08 Hours 20 Minutes 45 Seconds
Current date/time	Fri Oct 2 19:13:20 CEST 2015
DNS server (s)	127.0.0.1 10.0.0.1 137.204.66.15 137.204.65.28
Last config change	Wed Sep 30 16:05:26 CEST 2015
State table size	 0% (146/98000) Show states
MBUF Usage	 8% (2026/26584)
Load average	0.10, 0.09, 0.04
CPU usage	 2%
Memory usage	 8% of 989 MB
SWAP usage	 0% of 2048 MB
Disk usage	 / (ufs): 15% of 7.7G /var/run (ufs in RAM): 3% of 3.4M

Interfaces

WAN	↑	1000baseT <full-duplex> 137.204.66.231
OABOVIEW	↑	1000baseT <full-duplex> 10.0.0.253
MANAGEMENT	↑	1000baseT <full-duplex> 10.255.255.253
OABODMZ	↑	1000baseT <full-duplex> 172.16.16.253
FWSYNC	↑	1000baseT <full-duplex> 10.11.12.1

Status: Dashboard



System Information	
Name	nat2.bo.astro.it
Version	2.2.4-RELEASE (amd64) built on Sat Jul 25 19:57:37 CDT 2015 FreeBSD 10.1-RELEASE-p15 You are on the latest version.
Platform	pfSense
CPU Type	Intel(R) Xeon(R) CPU E5-2450 0 @ 2.10GHz Current: 262 MHz, Max: 2100 MHz
Uptime	17 Days 03 Hours 45 Minutes 37 Seconds
Current date/time	Fri Oct 2 19:41:53 CEST 2015
DNS server (s)	127.0.0.1 10.0.0.1 137.204.66.15 137.204.65.28
Last config change	Wed Sep 30 16:05:27 CEST 2015
State table size	 0% (32/98000) Show states
MBUF Usage	 7% (1776/26584)
Load average	0.05, 0.03, 0.00
CPU usage	 0%
Memory usage	 10% of 989 MB
SWAP usage	 0% of 2048 MB
Disk usage	 / (ufs): 15% of 7.7G /var/run (ufs in RAM): 3% of 3.4M

Interfaces		
WAN	↑	1000baseT <full-duplex> 137.204.66.232
OABOVIEW	↑	1000baseT <full-duplex> 10.0.0.252
MANAGEMENT	↑	1000baseT <full-duplex> 10.255.255.252
OABODMZ	↑	1000baseT <full-duplex> 172.16.16.252
FWSYNC	↑	1000baseT <full-duplex> 10.11.12.2

Firewall: Virtual IP Addresses



Virtual IPs

CARP Settings

Virtual IP address	Interface	Type	Description
10.0.0.251/24 (vhid 2)	OABOVIEW	ARP	Virtual IP CARP per OABOVIEW
10.255.255.251/24 (vhid 3)	MANAGEMENT	ARP	Virtual IP CARP per ESXFEATURES
172.16.16.251/24 (vhid 4)	OABODMZ	ARP	Virtual IP CARP per OABODMZ
137.204.66.233/24 (vhid 5)	WAN	ARP	management
137.204.66.131/24 (vhid 6)	WAN	ARP	dmz su wan
137.204.66.132/24 (vhid 7)	WAN	ARP	connection view

Note:

The virtual IP addresses defined on this page may be used in NAT mappings. You can check the status of your CARP Virtual IPs and interfaces here.

Firewall: Aliases



IP Ports URLs All

Name	Values	Description
vCenter		10.255.255.100
vwConnection	10.0.0.4	
vwSecurity	172.16.16.2	

**Note:**

Aliases act as placeholders for real hosts, networks or ports. They can be used to minimize the number of changes that have to be made if a host, network or port changes. You can enter the name of an alias instead of the host, network or port in all fields that have a red background. The alias will be resolved according to the list above. If an alias cannot be resolved (e.g. because you deleted it), the corresponding element (e.g. filter/NAT/shaper rule) will be considered invalid and skipped.

Firewall: NAT: Port Forward



Port Forward

1:1

Outbound

NPT

	If	Proto	Src. addr	Src. ports	Dest. addr	Dest. ports	NAT IP	NAT Ports	Description	
<input type="checkbox"/>	WAN	TCP	*	*	137.204.66.233	7331	10.255.255.100	7331		
<input type="checkbox"/>	WAN	TCP	*	*	137.204.66.233	3389 (MS RDP)	10.255.255.100	3389 (MS RDP)		
<input type="checkbox"/>	WAN	TCP	*	*	137.204.66.233	9443	10.255.255.100	9443		
<input type="checkbox"/>	WAN	TCP	*	*	137.204.66.233	443 (HTTPS)	10.255.255.100	443 (HTTPS)		
<input type="checkbox"/>	WAN	TCP/UDP	*	*	137.204.66.233	902	10.255.255.100	902		
<input type="checkbox"/>	WAN	TCP/UDP	*	*	137.204.66.233	903	10.255.255.100	903		
<input type="checkbox"/>	WAN	UDP	*	*	137.204.66.233	427	10.255.255.100	427		
<input type="checkbox"/>	WAN	TCP	*	*	137.204.66.132	443 (HTTPS)	vwSecurity	443 (HTTPS)		
<input type="checkbox"/>	WAN	TCP	*	*	137.204.66.132	32111	vwSecurity	32111	usb	
<input type="checkbox"/>	WAN	TCP/UDP	*	*	137.204.66.132	4172	vwSecurity	4172		
<input type="checkbox"/>	WAN	TCP/UDP	*	*	137.204.66.132	8443	vwSecurity	8443		

pass
 linked rule

Firewall: NAT: Outbound



Port Forward

1:1

Outbound

NPT

- Mode:
- Automatic outbound NAT rule generation (IPsec passthrough included)
 - Manual Outbound NAT rule generation (AON - Advanced Outbound NAT)
 - Hybrid Outbound NAT rule generation (Automatic Outbound NAT + rules below)
 - Disable Outbound NAT rule generation (No Outbound NAT rules)

Mappings:

	Interface	Source	Source Port	Destination	Destination Port	NAT Address	NAT Port	Static Port	Description	
<input type="checkbox"/>	<input checked="" type="checkbox"/> WAN	172.16.16.0/24	*	*	*	137.204.66.131	*	NO		
<input type="checkbox"/>	<input checked="" type="checkbox"/> WAN	10.255.255.0/24	*	*	*	137.204.66.233	*	NO		
<input type="checkbox"/>	<input checked="" type="checkbox"/> WAN	10.0.0.0/24	*	*	*	137.204.66.132	*	NO	Auto created rule for OABOVIEW to WAN	

Note:

If automatic outbound NAT selected, a mapping is automatically created for each interface's subnet (except WAN-type connections) and the rules on "Mappings" section of this page are ignored.

If manual outbound NAT is selected, outbound NAT rules will not be automatically generated and only the mappings you specify on this page will be used.

If hybrid outbound NAT is selected, mappings you specify on this page will be used, followed by the automatically generated ones.

If disable outbound NAT is selected, no rules will be used.

If a target address other than an interface's IP address is used, then depending on the way the WAN connection is setup, a Virtual IP may also be required.

Status: CARP



Temporarily Disable CARP | Leave Persistent CARP Maintenance Mode

CARP Interface	Virtual IP	Status
OABOVIEW@2	10.0.0.251	▶ BACKUP
MANAGEMENT@3	10.255.255.251	▶ BACKUP
OABODMZ@4	172.16.16.251	▶ BACKUP
WAN@5	137.204.66.233	▶ BACKUP
WAN@6	137.204.66.131	▶ BACKUP
WAN@7	137.204.66.132	▶ BACKUP

Note:
You can configure high availability sync settings here.

pfSync nodes:

0eb4bb95
de8e45a9

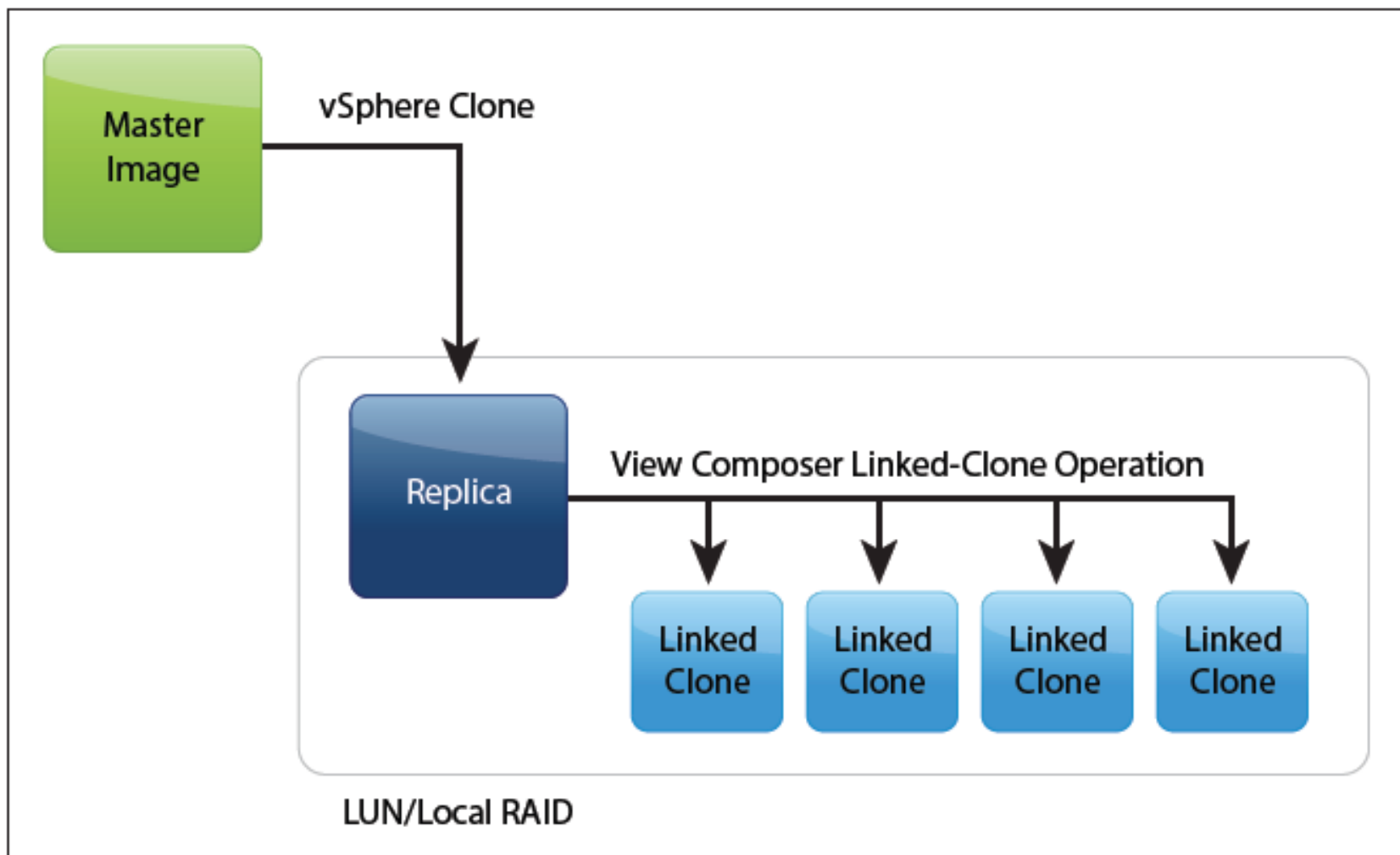


Figure 4: View Composer Linked Clones

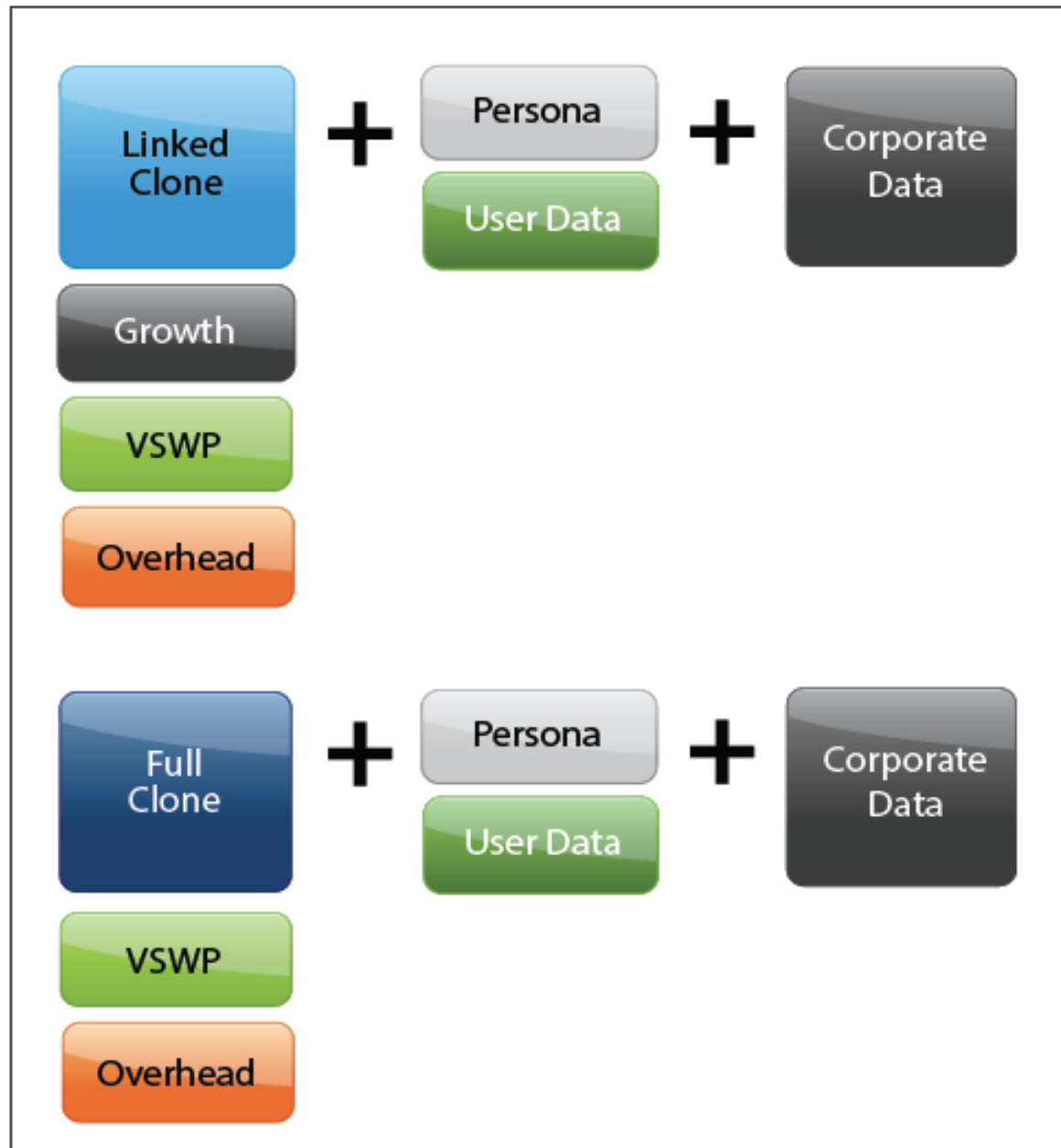


Figure 7: Make Allowances for Added Capacity Requirements

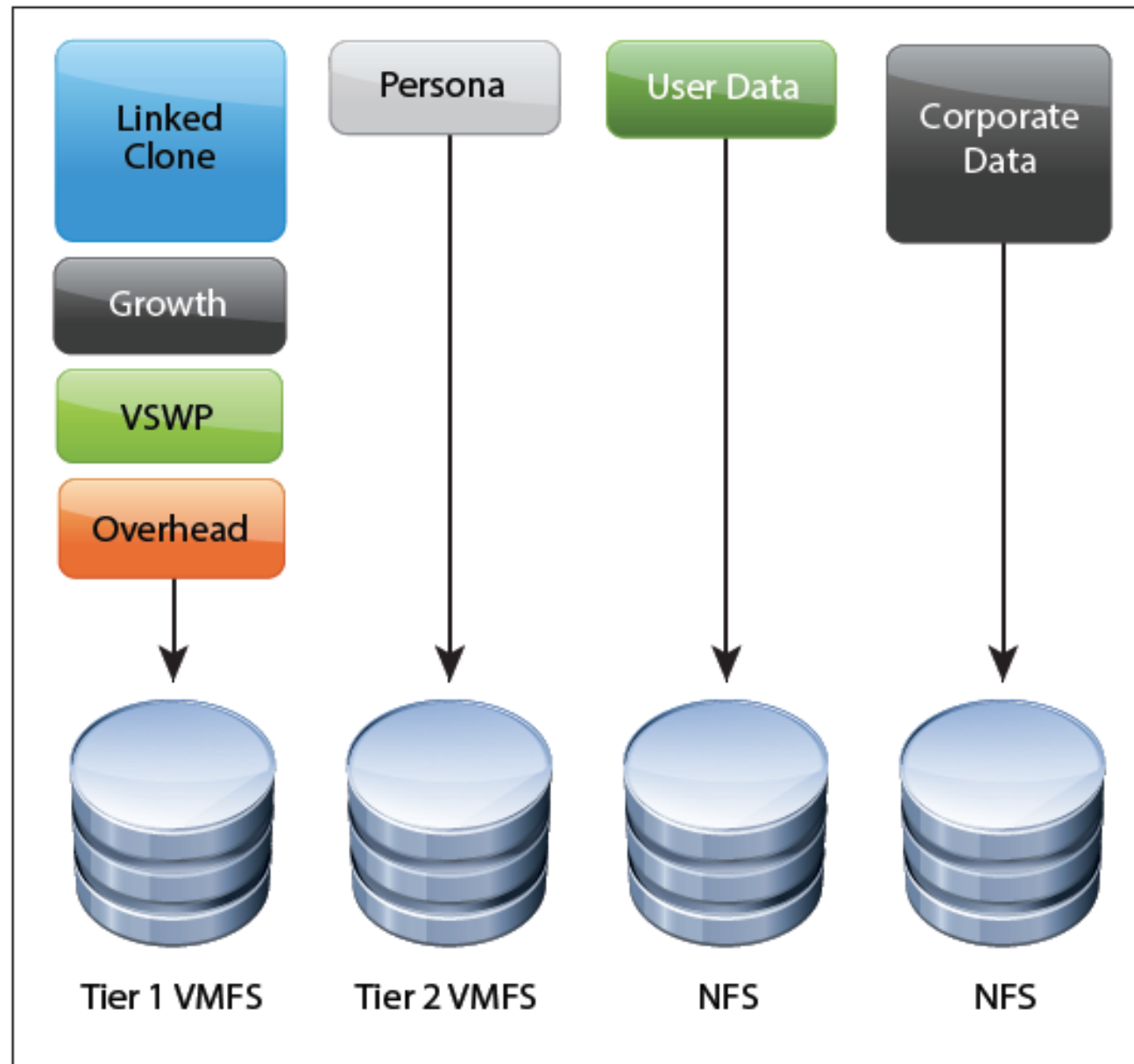


Figure 8: Linked-Clone Virtual Machine Data Layout

VMware ThinApp Deployment Guide

A Guide to Virtualizing Applications with VMware ThinApp

